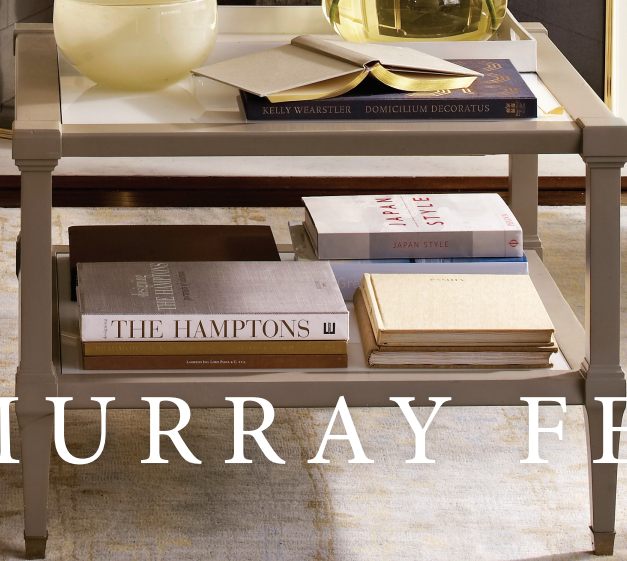




LIGHTING™



MURRAY FEISS





LIGHTING™



Through years of home decorating projects, I've learned that good lighting is essential to comfortable living. More than something to read by, it is a key ingredient of a room's decorating scheme, offering an opportunity to add lively character to a home. That's why I'm so pleased to partner with Murray Feiss to bring you this thoughtfully crafted line of portable and hardwire lighting.

In creating this assortment, my designers and I found inspiration in some of my favorite personal pieces, as well as in styles from the traditional to the contemporary. We emphasized clean lines and balanced proportions, and incorporated striking materials like silvered glass, alabaster, and Venetian glass. These materials, along with finishes like ebony lacquer, bronze, and limed oak, ensure that you'll find lighting that suits your decorating style.

Our hardwire lighting comes in a variety of configurations, including flush and semi-flush mounts, pendants, sconces, and chandeliers; specialized options allow you to find the perfect fixture for illuminating a kitchen island, a bathroom vanity, or even a garden path. Our portable lamp groups come in sizes appropriate to every setting, including table lamps, floor lamps, wall sconces, and torchieres. And whether made from classic linen or unexpected string, each shade has been customized to flatter the body upon which it sits.

Explore the complete line from Martha Stewart Lighting on the pages that follow. I'm confident that you'll find no better source for beautifully made lighting that illuminates with style.

Warm regards,

Martha Stewart



FIXTURES

-
- THE SCHOOLROOM MILK GLASS COLLECTION | PG 2
 - THE VENETO COLLECTION | PG 5
 - THE TEXTURED MERCURY COLLECTION | PG 8
 - THE CONSERVATORY COLLECTION | PG 10
 - THE DECO GLASS COLLECTION | PG 16
 - THE ARTS AND CRAFTS COLLECTION | PG 18
 - THE VICTORIAN GARDEN COLLECTION | PG 20

LEFT: TEXTURED MERCURY COLLECTION

INSIDE FRONT COVER: CONSERVATORY COLLECTION



THE SCHOOLROOM MILK GLASS COLLECTION

These sculptural fixtures take inspiration from classic American public lighting designs of the early 20th century. Their molded Milk Glass shades are mounted on shapely canopies of Warm Bronze or Frost Crackle ceramic. Available in a broad range of sizes, these pieces will warmly light a spacious great room, a cozy den, or a tranquil bathroom.

P1129 WBZ

HEIGHT : 18"
ADJUSTABLE HEIGHT : 21", 27", 33", 39", 45",
51", 57", 63", 69", 75"
DIAMETER : 12"
FINISH : WARM BRONZE
SHADE : MOUTH-BLOWN MILK GLASS
LAMPING : 1 EDISON SOCKET, 150 WATT MAX.
INCLUDES : (4) 12" AND (1) 6" STEMS, 15' WIRE

P1133 WBZ

HEIGHT : 9"
SEMI-FLUSH HEIGHT : 11"
ADJUSTABLE HEIGHT : 11", 18", 24", 30", 36", 42",
48", 54"
DIAMETER : 8"
FINISH : WARM BRONZE
SHADE : MOUTH-BLOWN MILK GLASS
LAMPING : 1 EDISON SOCKET, 150 WATT MAX.
INCLUDES : (3) 12" AND (1) 6" STEMS, 15' WIRE

P1134 WBZ

HEIGHT : 13"
SEMI-FLUSH HEIGHT : 15"
ADJUSTABLE HEIGHT : 15", 22", 28", 34", 40", 46",
52", 58", 64", 70"
DIAMETER : 12"
FINISH : WARM BRONZE
SHADE : MOUTH-BLOWN MILK GLASS
LAMPING : 1 EDISON SOCKET, 150 WATT MAX.
INCLUDES : (4) 12" AND (1) 6" STEMS, 15' WIRE

ALTERNATE INSTALLATION SEMI-FLUSH MOUNT





VS13601 WBZ

HEIGHT : 10"
WIDTH : 6"
EXTENSION : 7"
FINISH : WARM BRONZE
SHADE : MOUTH-BLOWN MILK GLASS
LAMPING : 1 EDISON SOCKET,
100 WATT MAX.

VS13602 WBZ

HEIGHT : 10"
LENGTH : 13"
EXTENSION : 7"
FINISH : WARM BRONZE
SHADE : MOUTH-BLOWN MILK GLASS
LAMPING : 2 EDISON SOCKETS,
100 WATT MAX.

VS13603 WBZ

HEIGHT : 10"
LENGTH : 22"
EXTENSION : 7"
FINISH : WARM BRONZE
SHADE : MOUTH-BLOWN MILK GLASS
LAMPING : 3 EDISON SOCKETS,
100 WATT MAX.

P1135 WBZ

HEIGHT : 16"
SEMI-FLUSH HEIGHT : 18"
ADJUSTABLE HEIGHT : 18", 26", 32", 38", 44", 50",
56", 62", 68", 74"
DIAMETER : 16"
FINISH : WARM BRONZE
LAMPING : 1 EDISON SOCKET, 150 WATT MAX.
INCLUDES : (4) 12" AND (1) 6" STEMS, 15' WIRE



THE SCHOOLROOM MILK GLASS COLLECTION

FM285 FC

HEIGHT : 11"

DIAMETER : 8"

FINISH : FROST CRACKLE

SHADE : MOUTH-BLOWN MILK GLASS

LAMPING : 1 EDISON SOCKET,
100 WATT MAX.



FM286 FC

HEIGHT : 16"

DIAMETER : 12"

FINISH : FROST CRACKLE

SHADE : MOUTH-BLOWN MILK GLASS

LAMPING : 1 EDISON SOCKET,
150 WATT MAX.



FM287 FC

HEIGHT : 16"

DIAMETER : 16"

FINISH : FROST CRACKLE

SHADE : MOUTH-BLOWN MILK GLASS

LAMPING : 1 EDISON SOCKET,
150 WATT MAX.



THE VENETO COLLECTION

Named for the celebrated Italian region that produces it, this set of chandeliers pays homage to the modern grandeur of Venetian glass. On each chandelier, sinuously curved arms of white Milk Glass or green Jadeite Glass surround a shapely body, and the chandelier is suspended from a matching glass canopy by a Polished Nickel chain. A coordinating two-light sconce echoes the graceful curves on a smaller scale.



F2319/6+3 MKG

HEIGHT : 26"
DIAMETER : 32"
FINISH : MILK GLASS
LAMPING : 9 CANDELABRA SOCKETS,
60 WATT MAX.
INCLUDES : 7' CHAIN AND 15' WIRE

F2319/6+3 JDG

HEIGHT : 26"
DIAMETER : 32"
FINISH : JADEITE GLASS
LAMPING : 9 CANDELABRA SOCKETS,
60 WATT MAX.
INCLUDES : 7' CHAIN AND 15' WIRE





WB1367 MKG

HEIGHT : 8"

WIDTH : 16"

EXTENSION : 7"

FINISH : MILK GLASS

LAMPING : 2 CANDELABRA SOCKETS,
60 WATT MAX.

F2318/8 MKG

HEIGHT : 26"

DIAMETER : 30"

FINISH : MILK GLASS

LAMPING : 8 CANDELABRA SOCKETS,
60 WATT MAX.

INCLUDES : 5' CHAIN AND 15' WIRE

F2320/5 MKG

HEIGHT : 26"

DIAMETER : 24"

FINISH : MILK GLASS

LAMPING : 5 CANDELABRA SOCKETS,
60 WATT MAX.

INCLUDES : 5' CHAIN AND 15' WIRE

F2320/5 JDG

HEIGHT : 26"
DIAMETER : 24"
FINISH : JADEITE GLASS
LAMPING : 5 CANDELABRA SOCKETS,
60 WATT MAX.
INCLUDES : 5' CHAIN AND 15' WIRE

F2318/8 JDG

HEIGHT : 26"
DIAMETER : 30"
FINISH : JADEITE GLASS
LAMPING : 8 CANDELABRA SOCKETS,
60 WATT MAX.
INCLUDES : 5' CHAIN AND 15' WIRE

WB1367 JDG

HEIGHT : 8"
WIDTH : 16"
EXTENSION : 7"
FINISH : JADEITE GLASS
LAMPING : 2 CANDELABRA SOCKETS,
60 WATT MAX.



F2318/8 JDG



F2320/5 JDG



WB1367 JDG

THE TEXTURED MERCURY COLLECTION

Surface texture gives silvered glass even greater fluidity and animation. In this group, inspired by Martha's kitchen fixtures, round shades are molded into quilted ripples, while the semi-flush utility light's square shade is tightly grooved. Finished in Warm Bronze, the assortment includes two adjustable pendants, along with three-light configurations that beautifully balance a kitchen island or a dining table.

F2322/3 WBZ

HEIGHT : 10"

ADJUSTABLE HEIGHT : 14", 20", 26",
32", 38", 44", 50", 62", 68"

WIDTH : 11"

LENGTH : 42"

FINISH : WARM BRONZE

SHADE : SILVERED GLASS

LAMPING : 3 EDISON SOCKETS,
100 WATT MAX.

INCLUDES : (4) 12" AND (1) 6" STEMS,
15' WIRE



F2323/3 WBZ

HEIGHT : 9"

ADJUSTABLE HEIGHT : 10", 18", 24",
30", 36", 42", 48", 54", 60", 66"

DIAMETER : 25"

FINISH : WARM BRONZE

SHADE : SILVERED GLASS

LAMPING : 3 EDISON SOCKETS,
100 WATT MAX.

INCLUDES : (4) 12" AND (1) 6" STEMS,
15' WIRE





FM288 WBZ



P1131 WBZ



P1132 WBZ

P1131 WBZ

HEIGHT : 7"
SEMI-FLUSH HEIGHT : 9"
ADJUSTABLE HEIGHT : 17", 23", 29", 35",
41", 47", 53", 59", 65"
DIAMETER : 11"
FINISH : WARM BRONZE
SHADE : SILVERED GLASS
LAMPING : 1 EDISON SOCKET,
100 WATT MAX.
INCLUDES : (4) 12" AND (1) 6" STEMS,
15' WIRE

P1132 WBZ

HEIGHT : 6"
SEMI-FLUSH HEIGHT : 8"
ADJUSTABLE HEIGHT : 16", 22", 28", 34",
40", 46", 52"
DIAMETER : 9"
FINISH : WARM BRONZE
SHADE : SILVERED GLASS
LAMPING : 1 EDISON SOCKET,
100 WATT MAX.
INCLUDES : (3) 12" AND (1) 6" STEMS,
15' WIRE

FM288 WBZ

HEIGHT : 9"
WIDTH : 12" SQUARE
FINISH : WARM BRONZE
SHADE : SILVERED GLASS
LAMPING : 1 EDISON SOCKET,
100 WATT MAX.

THE CONSERVATORY COLLECTION

This group offers an array of refined lighting options that serve virtually every room in the home. All pieces, including bath sconces, mirror sconces, and cut-glass hurricanes, are available in Polished Nickel or Warm Bronze finishes. A selection of chandeliers feature gently tapered shades in Champagne Taffeta. Library and swing-arm task lights complete the assortment.



F2312/8+4 PN

HEIGHT : 31"
DIAMETER : 36"
FINISH : POLISHED NICKEL
SHADE : ROUND CONE SHADE
IN CHAMPAGNE TAFFETA
LAMPING : 12 CANDELABRA SOCKETS,
60 WATT MAX.
INCLUDES : 7' CHAIN AND 20' WIRE

F2312/8+4 WBZ

HEIGHT : 31"
DIAMETER : 36"
FINISH : WARM BRONZE
SHADE : ROUND CONE SHADE
IN CHAMPAGNE TAFFETA
LAMPING : 12 CANDELABRA SOCKETS,
60 WATT MAX.
INCLUDES : 7' CHAIN AND 20' WIRE

WB1356 PN

HEIGHT : 13"
WIDTH : 7"
EXTENSION : 8"
FINISH : POLISHED NICKEL
SHADE : ROUND CONE SHADE
IN CHAMPAGNE TAFFETA
LAMPING : 1 CANDELABRA SOCKET,
60 WATT MAX.

WB1356 WBZ

HEIGHT : 13"
WIDTH : 7"
EXTENSION : 8"
FINISH : WARM BRONZE
SHADE : ROUND CONE SHADE
IN CHAMPAGNE TAFFETA
LAMPING : 1 CANDELABRA SOCKET,
60 WATT MAX



F2311/6 PN

F2311/6 PN

HEIGHT : 30"
DIAMETER : 29"
FINISH : POLISHED NICKEL
SHADE : ROUND CONE SHADE
IN CHAMPAGNE TAFFETA
LAMPING : 6 CANDELABRA SOCKETS,
60 WATT MAX.
INCLUDES : 5' CHAIN AND 15' WIRE



F2311/6 WBZ

F2311/6 WBZ

HEIGHT : 30"
DIAMETER : 29"
FINISH : WARM BRONZE
SHADE : ROUND CONE SHADE
IN CHAMPAGNE TAFFETA
LAMPING : 6 CANDELABRA SOCKETS,
60 WATT MAX.
INCLUDES : 5' CHAIN AND 15' WIRE



WB1359 PN



WB1359 WBZ

WB1359 PN

HEIGHT : 14"
WIDTH : 5"
EXTENSION : 7"
FINISH : POLISHED NICKEL
SHADE : MOUTH-BLOWN GLASS WITH V-CUT
AND OLIVE-CUT PATTERN
LAMPING : 1 CANDELABRA SOCKET,
60 WATT MAX.

WB1359 WBZ

HEIGHT : 14"
WIDTH : 5"
EXTENSION : 7"
FINISH : WARM BRONZE
SHADE : MOUTH-BLOWN GLASS WITH V-CUT
AND OLIVE-CUT PATTERN
LAMPING : 1 CANDELABRA SOCKET,
60 WATT MAX.



F2314/3 PN



F2315/4 PN



F2314/3 WBZ



F2315/4 WBZ

F2314/3 PN

HEIGHT : 24"

DIAMETER : 13"

FINISH : POLISHED NICKEL

SHADE : MOUTH-BLOWN GLASS

WITH V-CUT AND OLIVE-CUT PATTERN

LAMPING : 3 CANDELABRA SOCKETS,
60 WATT MAX.

INCLUDES : 5' CHAIN AND 15' WIRE

F2314/3 WBZ

HEIGHT : 24"

DIAMETER : 13"

FINISH : WARM BRONZE

SHADE : MOUTH-BLOWN GLASS

WITH V-CUT AND OLIVE-CUT PATTERN

LAMPING : 3 CANDELABRA SOCKETS,
60 WATT MAX.

INCLUDES : 5' CHAIN AND 15' WIRE

F2315/4 PN

HEIGHT : 30"

DIAMETER : 17"

FINISH : POLISHED NICKEL

SHADE : MOUTH-BLOWN GLASS

WITH V-CUT AND OLIVE-CUT PATTERN

LAMPING : 4 CANDELABRA SOCKETS,
60 WATT MAX.

INCLUDES : 5' CHAIN AND 15' WIRE

F2315/4 WBZ

HEIGHT : 30"

DIAMETER : 17"

FINISH : WARM BRONZE

SHADE : MOUTH-BLOWN GLASS

WITH V-CUT AND OLIVE-CUT PATTERN

LAMPING : 4 CANDELABRA SOCKETS,
60 WATT MAX.

INCLUDES : 5' CHAIN AND 15' WIRE



F2313/4 PN

HEIGHT : 18"
DIAMETER : 21"
FINISH : POLISHED NICKEL
SHADE : ROUND CONE SHADE
IN CHAMPAGNE TAFFETA
LAMPING : 4 CANDELABRA SOCKETS,
60 WATT MAX.
INCLUDES : 5' CHAIN AND 15' WIRE

F2313/4 WBZ

HEIGHT : 18"
DIAMETER : 21"
FINISH : WARM BRONZE
SHADE : ROUND CONE SHADE
IN CHAMPAGNE TAFFETA
LAMPING : 4 CANDELABRA SOCKETS,
60 WATT MAX.
INCLUDES : 5' CHAIN AND 15' WIRE

WB1357 PN

HEIGHT : 14"
WIDTH : 12"
EXTENSION : 5"
FINISH : POLISHED NICKEL
SHADE : HAND V-CUT MIRROR
LAMPING : 2 CANDELABRA SOCKETS,
60 WATT MAX.

WB1357 WBZ

HEIGHT : 14"
WIDTH : 12"
EXTENSION : 5"
FINISH : WARM BRONZE
SHADE : HAND V-CUT MIRROR
LAMPING : 2 CANDELABRA SOCKETS,
60 WATT MAX.



WB1360 PN

WB1360 PN

HEIGHT : 8"
WIDTH : 5"
EXTENSION : 28"
FINISH : POLISHED NICKEL
SHADE : SPUN STEEL SHADE
LAMPING : 1 EDISON SOCKET, 100 WATT MAX.



WB1360 WBZ

WB1360 WBZ

HEIGHT : 8"
WIDTH : 5"
EXTENSION : 28"
FINISH : WARM BRONZE
SHADE : SPUN STEEL SHADE
LAMPING : 1 EDISON SOCKET, 100 WATT MAX.

WB1358 PN

HEIGHT : 8"
WIDTH : 18"
EXTENSION : 12"
FINISH : POLISHED NICKEL
SHADE : STAMPED STEEL SHADE
LAMPING : 2 T-10 TYPE EDISON SOCKETS, 60 WATT MAX.



WB1358 PN

WB1358 WBZ

HEIGHT : 8"
WIDTH : 18"
EXTENSION : 12"
FINISH : WARM BRONZE
SHADE : STAMPED STEEL SHADE
LAMPING : 2 T-10 TYPE EDISON SOCKETS, 60 WATT MAX.



WB1358 WBZ

VS13301 PN

HEIGHT : 9"
LENGTH : 7"
EXTENSION : 8"
FINISH : POLISHED NICKEL
SHADE : MILK GLASS
LAMPING : 1 EDISON SOCKET, 100 WATT MAX.



VS13301 PN



VS13301 WBZ

VS13301 WBZ

HEIGHT : 9"
LENGTH : 7"
EXTENSION : 8"
FINISH : WARM BRONZE
SHADE : MILK GLASS
LAMPING : 1 EDISON SOCKET, 100 WATT MAX.



VS13302 PN

HEIGHT : 9"
LENGTH : 16"
EXTENSION : 8"
FINISH : POLISHED NICKEL
SHADE : MILK GLASS
LAMPING : 2 EDISON SOCKETS,
100 WATT MAX.



VS13302 WBZ

HEIGHT : 9"
LENGTH : 16"
EXTENSION : 8"
FINISH : WARM BRONZE
SHADE : MILK GLASS
LAMPING : 2 EDISON SOCKETS,
100 WATT MAX.



VS13303 PN

HEIGHT : 9"
LENGTH : 27"
EXTENSION : 8"
FINISH : POLISHED NICKEL
SHADE : MILK GLASS
LAMPING : 3 EDISON SOCKETS,
100 WATT MAX.



VS13303 WBZ

HEIGHT : 9"
LENGTH : 27"
EXTENSION : 8"
FINISH : WARM BRONZE
SHADE : MILK GLASS
LAMPING : 3 EDISON SOCKETS,
100 WATT MAX.

THE DECO GLASS COLLECTION

With simple, unadorned forms crafted from white opal glass and sparkling Polished Nickel, these elegant bath fixtures have an understated glamour reminiscent of old Hollywood. Double- and triple-light bath bars and a convertible semi-flush fixture are among the group's versatile options.



P1128 PN



VS13501 PN

VS13501 PN

HEIGHT : 10"

WIDTH : 5"

EXTENSION : 7"

FINISH : POLISHED NICKEL

SHADE : MILK GLASS

LAMPING : 1 EDISON SOCKET,
100 WATT MAX.

P1128 PN

HEIGHT : 12"

SEMI-FLUSH MOUNT HEIGHT : 13"

ADJUSTABLE HEIGHT : 13", 21", 27", 33", 39",
45", 51", 57"

DIAMETER : 12"

FINISH : POLISHED NICKEL

SHADE : MILK GLASS

LAMPING : 1 EDISON SOCKET, 100 WATT MAX.

INCLUDES : (3) 12" AND (1) 6" STEMS, 15' WIRE



VS13502 PN

VS13502 PN

HEIGHT : 10"
WIDTH : 14"
EXTENSION : 7"
FINISH : POLISHED NICKEL
SHADE : MILK GLASS
LAMPING : 2 EDISON SOCKETS,
100 WATT MAX.



VS13503 PN

VS13503 PN

HEIGHT : 10"
LENGTH : 22"
EXTENSION : 7"
FINISH : POLISHED NICKEL
SHADE : MILK GLASS
LAMPING : 3 EDISON SOCKETS,
100 WATT MAX.

THE ARTS AND CRAFTS COLLECTION

The composed harmony and restrained ornament of early 20th-century American Craftsman style are captured in this handsome outdoor lighting group. Die-cast in a Black Sable finish, these pieces lend tasteful illumination to porches, patios, and drives. The post lanterns and sconces come in a variety of sizes to best complement a home's proportions.



OL6100 BSB

HEIGHT : 14"
WIDTH : 7"
EXTENSION : 9"
FINISH : BLACK SABLE
SHADE : CLEAR GLASS
LAMPING : 2 CANDELABRA SOCKETS,
60 WATT MAX.



OL6101 BSB

HEIGHT : 18"
WIDTH : 9"
EXTENSION : 11"
FINISH : BLACK SABLE
SHADE : CLEAR GLASS
LAMPING : 2 CANDELABRA SOCKETS,
60 WATT MAX.

OL6102 BSB

HEIGHT : 23"
WIDTH : 11"
EXTENSION : 12"
FINISH : BLACK SABLE
SHADE : CLEAR GLASS
LAMPING : 4 CANDELABRA SOCKETS,
60 WATT MAX.

OL6103 BSB

HEIGHT : 14"
WIDTH : 7"
EXTENSION : 5"
FINISH : BLACK SABLE
SHADE : CLEAR GLASS
LAMPING : 2 CANDELABRA SOCKETS,
60 WATT MAX.

OL6106 BSB

HEIGHT : 21"
WIDTH : 9"
FINISH : BLACK SABLE
SHADE : CLEAR GLASS
LAMPING : 2 CANDELABRA SOCKETS,
60 WATT MAX.

OL6107 BSB

HEIGHT : 25"
WIDTH : 11"
FINISH : BLACK SABLE
SHADE : CLEAR GLASS
LAMPING : 4 CANDELABRA SOCKETS,
60 WATT MAX.

OL6111 BSB

HEIGHT : 19"
WIDTH : 9"
FINISH : BLACK SABLE
SHADE : CLEAR GLASS
LAMPING : 2 CANDELABRA SOCKETS,
60 WATT MAX.

OL6113 BSB

HEIGHT : 5"
WIDTH : 11"
FINISH : BLACK SABLE
SHADE : CLEAR GLASS
LAMPING : 2 EDISON SOCKETS,
60 WATT MAX.



OL6106 BSB



OL6111 BSB



OL6113 BSB



OL6107 BSB

FLUSH MOUNTS AND HANGING LANTERNS ARE APPROVED FOR DAMP LOCATIONS.
ALL OTHERS ARE APPROVED FOR WET LOCATIONS.

THE VICTORIAN GARDEN COLLECTION

Die-casting brings out crisp detail in this group, which was inspired by time-honored outdoor lighting designs. Each piece is composed of clear glass panels within a frame finished in Weathered Zinc. Post lanterns and wall sconces in multiple sizes, along with flush-mount and pendant fixtures, provide handsome sources of light for any open-air space.

OL6201 WZC

HEIGHT : 10"
WIDTH : 8"
EXTENSION : 10"
FINISH : WEATHERED ZINC
SHADE : CLEAR GLASS
LAMPING : 1 EDISON SOCKET,
100 WATT MAX.



OL6201 WZC

OL6202 WZC

HEIGHT : 15"
WIDTH : 11"
EXTENSION : 12"
FINISH : WEATHERED ZINC
SHADE : CLEAR GLASS
LAMPING : 2 CANDELABRA SOCKETS,
60 WATT MAX.



OL6202 WZC

OL6204 WZC

HEIGHT : 18"
WIDTH : 13"
EXTENSION : 15"
FINISH : WEATHERED ZINC
SHADE : CLEAR GLASS
LAMPING : 3 CANDELABRA SOCKETS,
60 WATT MAX.



OL6204 WZC

OL6205 WZC

HEIGHT : 22"
WIDTH : 16"
EXTENSION : 17"
FINISH : WEATHERED ZINC
SHADE : CLEAR GLASS
LAMPING : 4 CANDELABRA SOCKETS,
60 WATT MAX.



OL6205 WZC



OL6203 WZC



OL6209 WZC

OL6203 WZC

HEIGHT : 14"
 WIDTH : 13"
 EXTENSION : 7"
 FINISH : WEATHERED ZINC
 SHADE : CLEAR GLASS
 LAMPING : 2 CANDELABRA SOCKETS,
 60 WATT MAX.

OL6208 WZC

HEIGHT : 19"
 WIDTH : 13"
 FINISH : WEATHERED ZINC
 SHADE : CLEAR GLASS
 LAMPING : 3 CANDELABRA SOCKETS,
 60 WATT MAX.



OL6208 WZC



OL6212 WZC

OL6209 WZC

HEIGHT : 23"
 WIDTH : 16" SQUARE
 FINISH : WEATHERED ZINC
 SHADE : CLEAR GLASS
 LAMPING : 4 CANDELABRA SOCKETS,
 60 WATT MAX.

OL6212 WZC

HEIGHT : 20"
 WIDTH : 13"
 FINISH : WEATHERED ZINC
 SHADE : CLEAR GLASS
 LAMPING : 3 CANDELABRA SOCKETS,
 60 WATT MAX.
 INCLUDES : 5' CHAIN AND 15' WIRE

OL6213 WZC

HEIGHT : 6"
 DIAMETER : 14"
 FINISH : WEATHERED ZINC
 SHADE : CLEAR GLASS
 LAMPING : 2 EDISON SOCKETS,
 60 WATT MAX.



OL6213 WZC

FLUSH MOUNTS AND HANGING LANTERNS ARE APPROVED FOR DAMP LOCATIONS. ALL OTHERS ARE APPROVED FOR WET LOCATIONS.



A white ceramic lamp with a perforated, lattice-like texture. It has a large, cylindrical, beige fabric drum shade. The lamp sits on a dark wood side table.

A silver vase filled with a large bouquet of white roses. The vase sits on a matching silver tray on the side table.

A light blue ceramic cup and saucer set. The cup is on a white saucer, which is placed on a dark wood side table. A magazine is also on the table.

A portion of a light green upholstered chair is visible on the left side of the image. A white, fringed throw blanket is draped over the chair's back.

A large-scale wallpaper featuring a detailed map of a city, likely Paris, with a prominent blue river (the Seine) and the Eiffel Tower visible. The map is rendered in a light, textured style.

A window with white trim and a white frame, set against a light blue wall. The window is partially visible on the right side of the image.

LAMPS

-
- THE ALABASTER COLLECTION | PG 24
 - THE RIBBON GLASS COLLECTION | PG 25
 - THE SILVERED GLASS COLLECTION | PG 26
 - THE MILK GLASS COLLECTION | PG 27
 - THE GLAZED CERAMIC COLLECTION | PG 28
 - THE LIMED OAK COLLECTION | PG 30
 - THE VENETIAN GLASS COLLECTION | PG 31
 - THE CONSERVATORY COLLECTION | PG 33
 - THE 30s MODERN COLLECTION | PG 36
 - THE EBONY LACQUER COLLECTION | PG 38

LEFT: RIBBON GLASS COLLECTION



THE ALABASTER COLLECTION

This stately group has an aura of classical antiquity. Each one-of-a-kind lamp base and finial is crafted from genuine alabaster, hand-carved to emphasize its natural luster. The table lamps are finished with graceful bell shades and brass fittings. A favorite antique of Martha's inspired the distinctive table torchiere.

9540 ALB

HEIGHT : 27"
DIAMETER : 16"
FINISH : ALABASTER
SHADE : ROUND BELL SHADE IN FAWN SHANTUNG
DOUBLE IVORY SOFT-LINED
LAMPING : 1 EDISON 3-WAY SOCKET,
150 WATT MAX.



HAND-CARVED ALABASTER FINIAL



9541 ALB

HEIGHT : 26"
DIAMETER : 16"
FINISH : ALABASTER
SHADE : ROUND BELL SHADE IN FAWN SHANTUNG
DOUBLE IVORY SOFT-LINED
LAMPING : 1 EDISON 3-WAY SOCKET,
150 WATT MAX.



9542 ALB

HEIGHT : 31"
DIAMETER : 20"
FINISH : ALABASTER
SHADE : ROUND BELL SHADE IN FAWN SHANTUNG
DOUBLE IVORY SOFT-LINED
LAMPING : 1 EDISON 3-WAY SOCKET,
150 WATT MAX.

9543 ALB

HEIGHT : 14"
DIAMETER : 6"
FINISH : ALABASTER
SHADE : ROUND CARVED ALABASTER OPENING
LAMPING : 1 CANDELABRA ON-OFF SOCKET,
60 WATT MAX. FULL-RANGE DIMMER SWITCH



THE RIBBON GLASS COLLECTION

The fluid swirls on these lamps are a testament to the glassmaker's art. In a remarkable process, the glass is mouth-blown and simultaneously embellished with ribbons of white. We've mounted the lamps on Polished Nickel bases and topped them with clear ball finials and gently tapered drum shades for a fresh, modern impact.

9534 RG

HEIGHT : 27"

DIAMETER : 16"

FINISH : RIBBON GLASS

SHADE : ROUND DRUM SHADE IN OYSTER FAILLE
WITH WHITE GROSGRAIN RIBBON TRIM

LAMPING : 1 EDISON 3-WAY SOCKET,
150 WATT MAX.



9535 RG

HEIGHT : 21"

DIAMETER : 15"

FINISH : RIBBON GLASS

SHADE : ROUND DRUM SHADE IN OYSTER FAILLE
WITH WHITE GROSGRAIN RIBBON TRIM

LAMPING : 1 EDISON ON-OFF SOCKET,
100 WATT MAX.



9536 RG

HEIGHT : 33"

DIAMETER : 19"

FINISH : RIBBON GLASS

SHADE : ROUND DRUM SHADE IN OYSTER FAILLE
WITH WHITE GROSGRAIN RIBBON TRIM

LAMPING : 1 EDISON 3-WAY SOCKET,
150 WATT MAX.



THE SILVERED GLASS COLLECTION

Silvered glass makes a lovely room accent, reflecting the colors and light around it. These shapely, mouth-blown lamps are modeled after vases and lamps from Martha's own collection. The gleaming glass is offset by deep-colored, ivory-lined bell shades that cast a warm, clear light. Two of the shades feature wide galleries with woven lattice trim for added sophistication.



9530 SVG

HEIGHT : 22"

DIAMETER : 15"

FINISH : SILVERED GLASS

SHADE : ROUND BELL SHADE IN SEAL TAFFETA,
DOUBLE IVORY SOFT-LINED

LAMPING : 1 EDISON 3-WAY SOCKET,
100 WATT MAX.

9531 SVG

HEIGHT : 26"

DIAMETER : 18"

FINISH : SILVERED GLASS

SHADE : ROUND BELL SHADE WITH WOVEN LATTICE
TRIM IN SEAL TAFFETA, DOUBLE IVORY SOFT-LINED

LAMPING : 1 EDISON 3-WAY SOCKET,
150 WATT MAX.



9601 SVG

HEIGHT : 32"

DIAMETER : 20"

FINISH : SILVERED GLASS

SHADE : ROUND BELL SHADE WITH WOVEN LATTICE
TRIM IN SEAL TAFFETA, DOUBLE IVORY SOFT-LINED

LAMPING : 1 EDISON 3-WAY SOCKET,
150 WATT MAX.

THE MILK GLASS COLLECTION

The most impactful lamps are sculptural objects in their own right. Our Milk Glass Collection takes inspiration from classical Greek and Roman forms. The lamps' supple shapes are made from mouth-blown opal glass, finished in pure white and crowned with soft-toned bell shades.



9537 MKGO

HEIGHT : 29"
DIAMETER : 19"
FINISH : MILK GLASS
SHADE : ROUND BELL SHADE IN FAWN SHANTUNG
DOUBLE WHITE SOFT-LINED
LAMPING : 1 EDISON 3-WAY SOCKET,
150 WATT MAX.

9538 MKGO

HEIGHT : 32"
DIAMETER : 19"
FINISH : MILK GLASS
SHADE : ROUND BELL SHADE IN FAWN SHANTUNG
DOUBLE WHITE SOFT-LINED
LAMPING : 1 EDISON 3-WAY SOCKET,
150 WATT MAX.



9539 MKGO

HEIGHT : 28"
DIAMETER : 19"
FINISH : MILK GLASS
SHADE : ROUND BELL SHADE IN FAWN SHANTUNG
DOUBLE WHITE SOFT-LINED
LAMPING : 1 EDISON 3-WAY SOCKET,
150 WATT MAX.



THE GLAZED CERAMIC COLLECTION

Traditional Chinese vases and urns lend their varied forms to our colorful ceramic pieces. The five styles in this collection boast a delicate crackle glaze; one features an elegant grooved pattern and is available in crackle or solid glaze. Each lamp, resting on a wood pedestal finished in glossy dark walnut, has its own cheerful color and bold shape. For an elegant effect, some of these lamps are paired with warm-toned bell shades, while crisp drum shades add modern flair to the others.



9550 GCS

HEIGHT : 27"

DIAMETER : 17"

FINISH : SEASHELL

SHADE : ROUND DRUM SHADE IN FAWN SHANTUNG

LAMPING : 1 EDISON 3-WAY SOCKET, 150 WATT MAX.

9550 GCD

HEIGHT : 27"

DIAMETER : 17"

FINISH : DIJON

SHADE : ROUND DRUM SHADE IN FAWN SHANTUNG

LAMPING : 1 EDISON 3-WAY SOCKET, 150 WATT MAX.



9548 GCS

HEIGHT : 30"

DIAMETER : 23"

FINISH : SEASHELL

SHADE : ROUND BELL SHADE IN HAZELNUT TAFFETA

DOUBLE-IVORY SOFT-LINED

LAMPING : 1 EDISON 3-WAY SOCKET, 150 WATT MAX.

9548 GCF

HEIGHT : 30"

DIAMETER : 23"

FINISH : FOUNTAIN

SHADE : ROUND BELL SHADE IN FAWN SHANTUNG

DOUBLE-IVORY SOFT-LINED

LAMPING : 1 EDISON 3-WAY SOCKET, 150 WATT MAX.

THE GLAZED CERAMIC COLLECTION

9552 GCC

HEIGHT : 30"

DIAMETER : 19"

FINISH : CELADON

SHADE : ROUND BELL SHADE IN FAWN TAFFETA

DOUBLE IVORY SOFT-LINED

LAMPING : 1 EDISON 3-WAY SOCKET, 150 WATT MAX.

9552 GCS

HEIGHT : 30"

DIAMETER : 19"

FINISH : SEASHELL

SHADE : ROUND BELL SHADE IN HAZELNUT TAFFETA

DOUBLE IVORY SOFT-LINED

LAMPING : 1 EDISON 3-WAY SOCKET, 150 WATT MAX.



9552 GCC



9552 GCS



9551 GCD



9551 GCF

9551 GCD

HEIGHT : 33"

DIAMETER : 22"

FINISH : DIJON

SHADE : ROUND BELL SHADE IN HAZELNUT TAFFETA

DOUBLE IVORY SOFT-LINED

LAMPING : 1 EDISON 3-WAY SOCKET, 150 WATT MAX.

9551 GCF

HEIGHT : 33"

DIAMETER : 22"

FINISH : FOUNTAIN

SHADE : ROUND BELL SHADE IN FAWN TAFFETA

DOUBLE IVORY SOFT-LINED

LAMPING : 1 EDISON 3-WAY SOCKET, 150 WATT MAX.

9549 GCF

HEIGHT : 28"

DIAMETER : 15"

FINISH : FOUNTAIN

SHADE : ROUND DRUM SHADE IN FAWN SHANTUNG

DOUBLE-IVORY SOFT-LINED

LAMPING : 1 EDISON 3-WAY SOCKET, 100 WATT MAX.

9549 GCS

HEIGHT : 28"

DIAMETER : 15"

FINISH : SEASHELL

SHADE : ROUND DRUM SHADE IN FAWN SHANTUNG

DOUBLE-IVORY SOFT-LINED

LAMPING : 1 EDISON 3-WAY SOCKET, 100 WATT MAX.



9549 GCF



9549 GCS



THE LIMED OAK COLLECTION

In this collection, svelte lines and contrasting textures create a cool sophistication. We've paired brushed nickel with real oak, limed to reveal its wispy grain. The lamps sport linen drum shades, while the torchiere's spherical shade, in an even more contemporary twist, is perforated nickel.

FL6197 LO

HEIGHT : 66"
DIAMETER : 19"
FINISH : LIMED OAK
SHADE : ROUND DRUM SHADE
IN ALMOND LINEN
LAMPING : 2 EDISON ON-OFF SOCKETS,
100 WATT MAX.

T1163 LO

HEIGHT : 73"
DIAMETER : 14"
FINISH : LIMED OAK
SHADE : ROUND BRUSHED-NICKEL
PERFORATED STEEL SHADE
LAMPING : 1 EDISON ON-OFF SOCKET,
150 WATT MAX. IN-LINE DIMMER

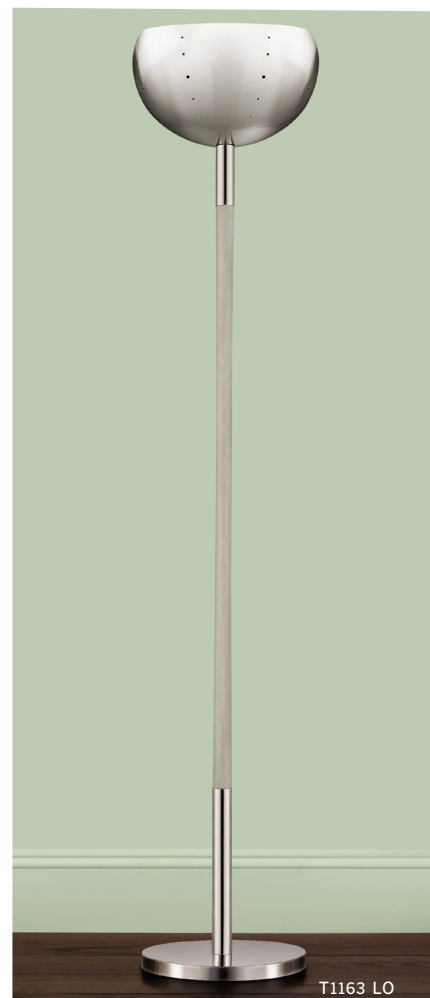
9546 LO

HEIGHT : 27"
DIAMETER : 16"
FINISH : LIMED OAK
SHADE : ROUND DRUM SHADE
IN ALMOND LINEN
DOUBLE IVORY SOFT-LINED
LAMPING : 1 EDISON 3-WAY SOCKET,
150 WATT MAX.

TWIN BRUSHED-NICKEL PULLS



FL6197 LO



T1163 LO



9546 LO

THE VENETIAN GLASS COLLECTION

The island of Murano in Venice is home to a centuries-old glass-blowing tradition. Mouth-blown in the style of Murano creations from the 1950's, these lamps reflect their origins: delicately fluted table lamps suggest ripples of water, while the floor lamps feature lovely nickel accents that refract light and provide architectural drama. Sleek drum shades and genuine marble bases complete the chic look.

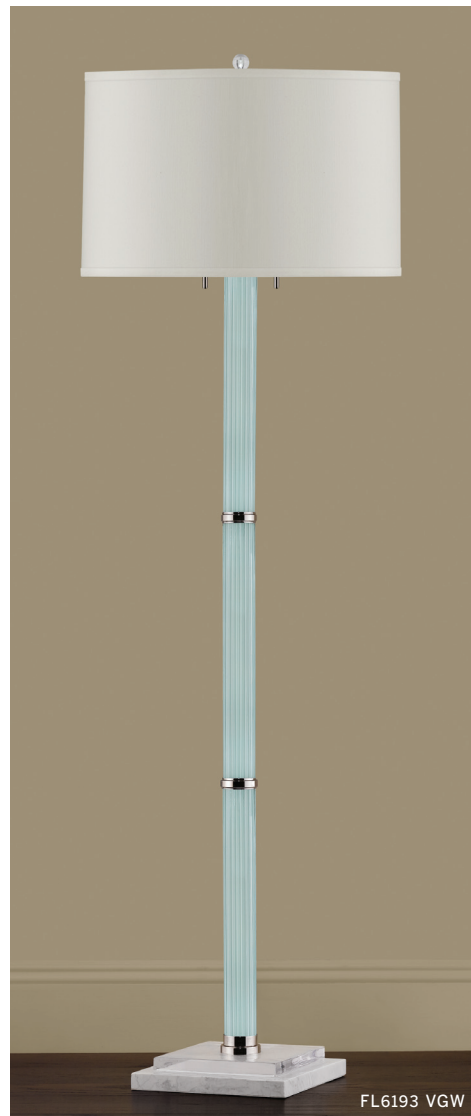
9532 VGW

HEIGHT : 30"
DIAMETER : 18"
FINISH : WATERFALL
SHADE : ROUND DRUM SHADE
IN SWAN SHANTUNG
LAMPING : 2 EDISON ON-OFF SOCKETS,
100 WATT MAX.



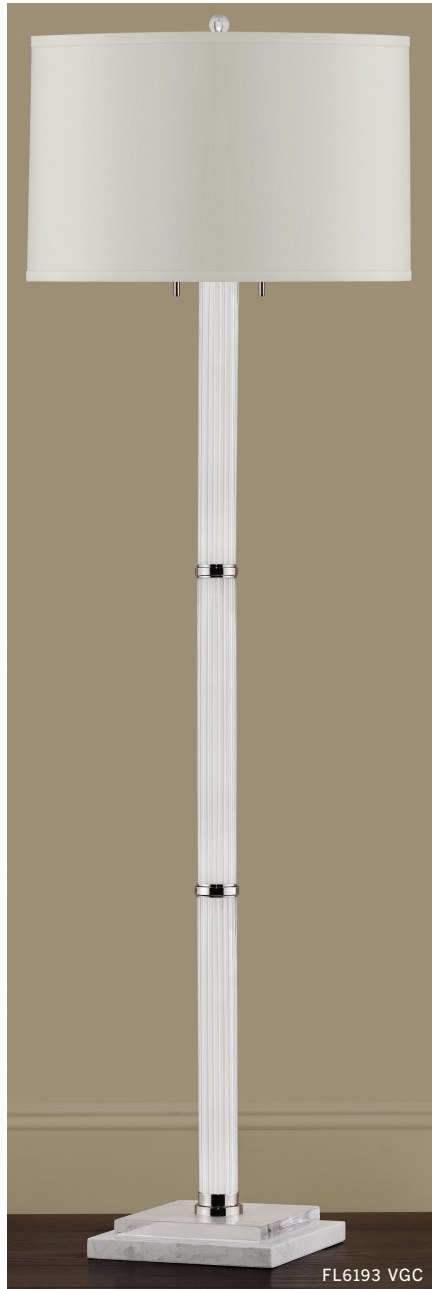
9533 VGW

HEIGHT : 26"
DIAMETER : 17"
FINISH : WATERFALL
SHADE : ROUND DRUM SHADE
IN SWAN SHANTUNG
LAMPING : 1 EDISON 3-WAY SOCKET,
150 WATT MAX.



MARBLE BASE





9532 VGC

HEIGHT : 30"
DIAMETER : 18"
FINISH : CLOUD
SHADE : ROUND DRUM SHADE
IN SWAN SHANTUNG
LAMPING : 2 EDISON ON-OFF SOCKETS,
100 WATT MAX.

9533 VGC

HEIGHT : 26"
DIAMETER : 17"
FINISH : CLOUD
SHADE : ROUND DRUM SHADE
IN SWAN SHANTUNG
LAMPING : 1 EDISON 3-WAY SOCKET,
150 WATT MAX.

FL6193 VGC

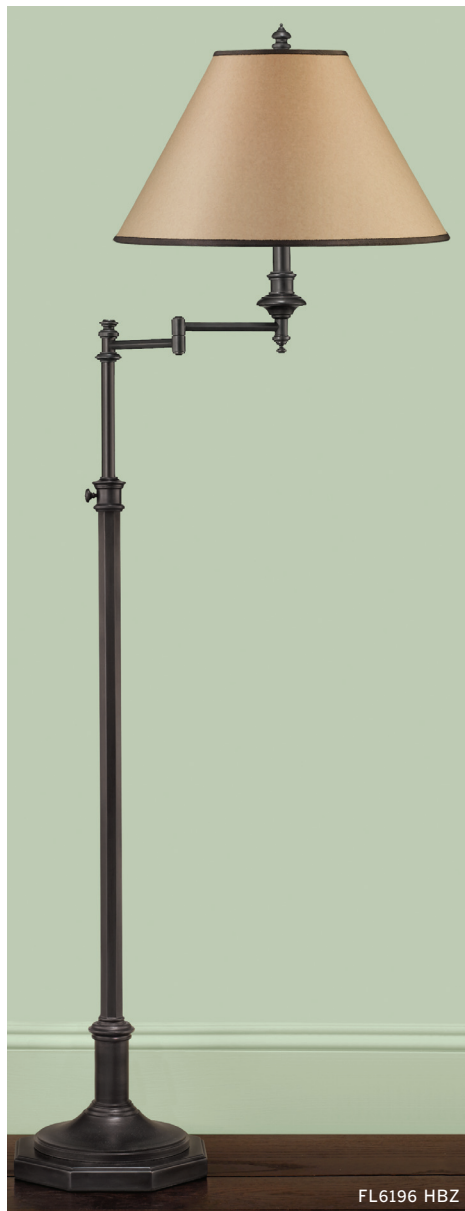
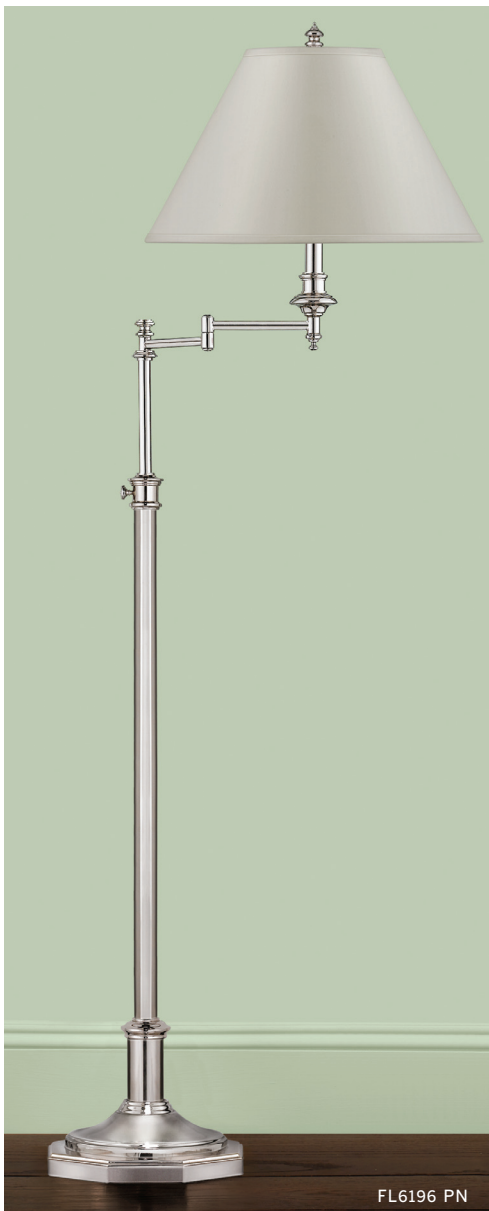
HEIGHT : 67"
DIAMETER : 21"
FINISH : CLOUD
SHADE : ROUND DRUM SHADE
IN SWAN SHANTUNG
LAMPING : 2 EDISON ON-OFF SOCKETS,
100 WATT MAX.



TWIN BRUSHED-NICKEL PULLS

THE CONSERVATORY COLLECTION

With their distinguished bearing, these lamps add refinement to a well-appointed room. To complement a variety of decorating schemes, all of the lamps in this collection are available in two finishes: the adjustable-height floor and table lamps pair a Polished-Nickel finish with silky pearl gray shades or Heirloom Bronze finish with vintage-style kraft paper shades. The lofty torchiere, also adjustable in height, is enclosed by white frosted glass. A wall sconce offers even more variety.



SWING ARM AND ADJUSTABLE HEIGHT

FL6196 PN

ADJUSTABLE HEIGHT : 56" - 63"
DIAMETER : 18"
FINISH : POLISHED NICKEL
SHADE : ROUND CONE SHADE
IN PEARL GRAY TAFFETTA
LAMPING : 1 EDISON 3-WAY SOCKET,
150 WATT MAX.

FL6196 HBZ

ADJUSTABLE HEIGHT : 56" - 63"
DIAMETER : 18"
FINISH : HEIRLOOM BRONZE
SHADE : ROUND CONE SHADE
IN KRAFT PAPER WITH BROWN
GROSGRAIN RIBBON TRIM
LAMPING : 1 EDISON 3-WAY SOCKET,
150 WATT MAX.

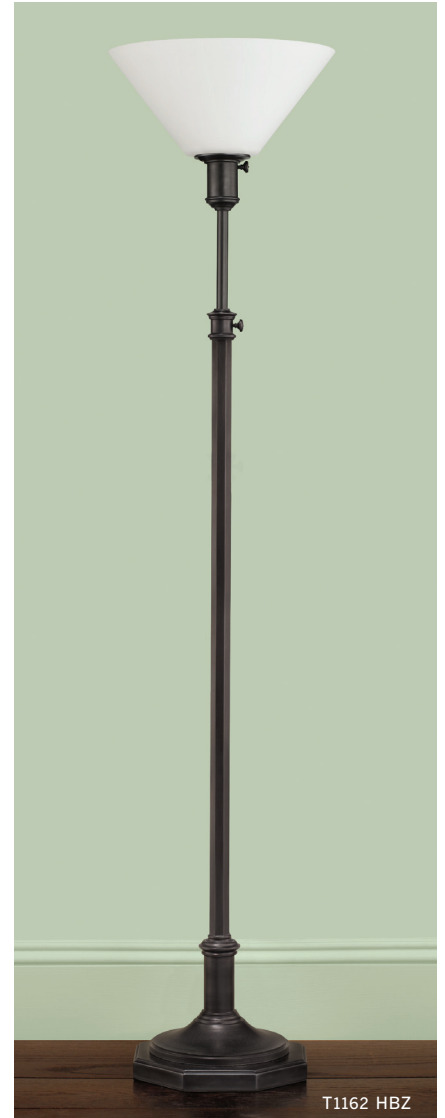
T1162 PN

ADJUSTABLE HEIGHT : 56" - 69"
DIAMETER : 14"
FINISH : POLISHED NICKEL
SHADE : ROUND WHITE OPAL ETCHED GLASS
CONE SHADE
LAMPING : 1 EDISON 3-WAY SOCKET, 150 WATT MAX.



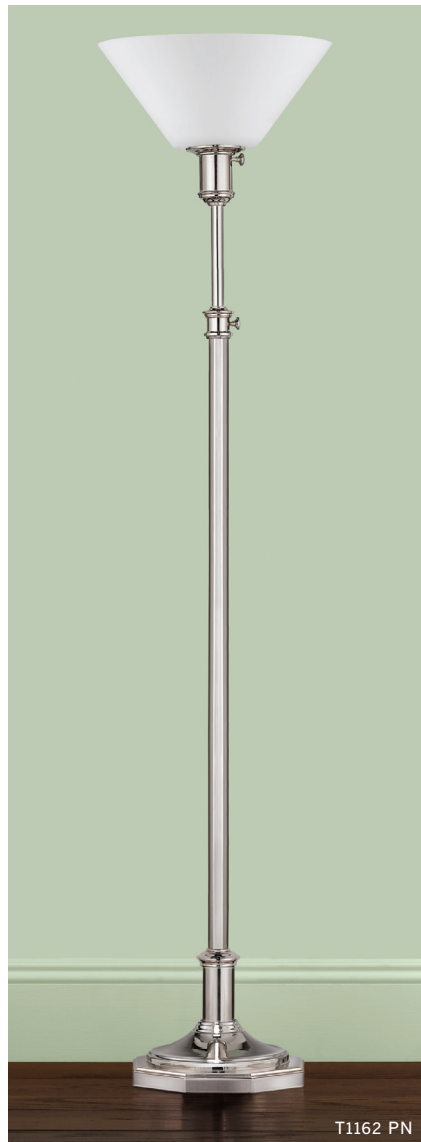
T1162 HBZ

ADJUSTABLE HEIGHT : 56" - 69"
DIAMETER : 14"
FINISH : HEIRLOOM BRONZE
SHADE : ROUND WHITE OPAL ETCHED GLASS
CONE SHADE
LAMPING : 1 EDISON 3-WAY SOCKET, 150 WATT MAX.



WB1340 PN

HEIGHT : 18"
DIAMETER : 14"
FINISH : POLISHED NICKEL
SHADE : ROUND CONE SHADE
IN PEARL GRAY TAFFETTA
LAMPING : 1 EDISON ON-OFF SOCKET,
100 WATT MAX.
INCLUDES : SWING ARM AND CORD COVER



WB1340 HBZ

HEIGHT : 18"
DIAMETER : 14"
FINISH : HEIRLOOM BRONZE
SHADE : ROUND CONE SHADE IN KRAFT PAPER
WITH BROWN GROSGRAIN RIBBON TRIM
LAMPING : 1 EDISON ON-OFF SOCKET,
100 WATT MAX.
INCLUDES : SWING ARM AND CORD COVER





FL6195 PN



9545 HBZ



FL6195 HBZ



9545 PN

9545 PN

ADJUSTABLE HEIGHT : 22" - 28"

DIAMETER : 15"

FINISH : POLISHED NICKEL

SHADE : ROUND CONE SHADE
IN PEARL GRAY TAFFETTA

LAMPING : 1 EDISON ON-OFF SOCKET,
100 WATT MAX.

9545 HBZ

ADJUSTABLE HEIGHT : 22" - 28"

DIAMETER : 15"

FINISH : HEIRLOOM BRONZE

SHADE : ROUND CONE SHADE IN KRAFT PAPER
WITH BROWN GROSGRAIN RIBBON TRIM

LAMPING : 1 EDISON ON-OFF SOCKET,
100 WATT MAX.

FL6195 PN

ADJUSTABLE HEIGHT : 52" - 65"

DIAMETER : 22"

FINISH : POLISHED NICKEL

SHADE : ROUND CONE SHADE
IN PEARL GRAY TAFFETTA

LAMPING : 1 EDISON 3-WAY SOCKET,
150 WATT MAX.

FL6195 HBZ

ADJUSTABLE HEIGHT : 52" - 65"

DIAMETER : 22"

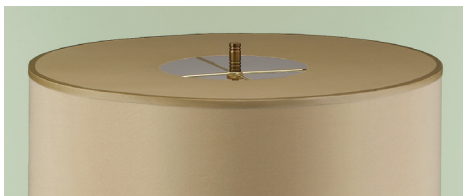
FINISH : HEIRLOOM BRONZE

SHADE : ROUND CONE SHADE IN KRAFT PAPER
WITH BROWN GROSGRAIN RIBBON TRIM

LAMPING : 1 EDISON 3-WAY SOCKET,
150 WATT MAX.

THE 30s MODERN COLLECTION

A period Austrian lamp inspired this group's streamlined style. Available in Fine Brushed Nickel or Heirloom Brass, the soaring bases are topped by shallow, covered drum shades that highlight their stature. Distinctive fittings and crisp surface etching combine to evoke the optimistic era when modernism was born.



COVERED DRUM SHADE



9547 HBS

HEIGHT : 26"

DIAMETER : 18"

FINISH : HEIRLOOM BRASS

SHADE : ROUND COVERED DRUM SHADE
IN MUSHROOM TAFFETTA

LAMPING : 2 EDISON ON-OFF SOCKETS,
100 WATT MAX.

FULL RANGE DIMMER SWITCH

FL6198 HBS

HEIGHT : 67"

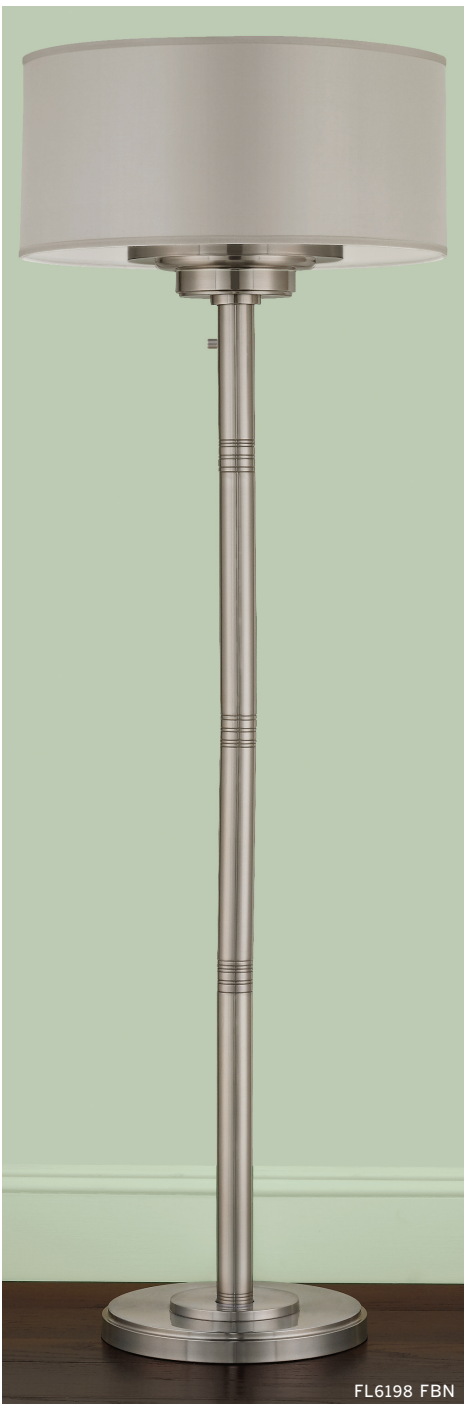
DIAMETER : 23"

FINISH : HEIRLOOM BRASS

SHADE : ROUND COVERED DRUM SHADE
IN MUSHROOM TAFFETTA

LAMPING : 2 EDISON ON-OFF SOCKETS,
100 WATT MAX.

FULL RANGE DIMMER SWITCH



FL6198 FBN

FL6198 FBN

HEIGHT : 67"

DIAMETER : 23"

FINISH : FINE BRUSHED NICKEL

SHADE : ROUND COVERED DRUM SHADE
IN PEARL GRAY TAFFETTA

LAMPING : 2 EDISON ON-OFF SOCKETS,
100 WATT MAX.

FULL RANGE DIMMER SWITCH

9547 FBN

HEIGHT : 26"

DIAMETER : 18"

FINISH : FINE BRUSHED NICKEL

SHADE : ROUND COVERED DRUM SHADE
IN PEARL GRAY TAFFETTA

LAMPING : 2 EDISON ON-OFF SOCKETS,
100 WATT MAX.

FULL RANGE DIMMER SWITCH



9547 FBN

THE EBONY LACQUER COLLECTION

Whimsical carved wood becomes strikingly grand when dressed in black. The elaborately beveled bases and finials of these lamps are finished in a glossy ebony lacquer, bringing every intricate detail into sharp relief. Their string shades provide the final smart detail.



9544 EBL



ECRU STRING SHADE



FL6194 EBL

9544 EBL

HEIGHT : 30"

DIAMETER : 18"

FINISH : EBONY LACQUER

SHADE : OCTOGONAL STRING SHADE IN ECRU
DOUBLE IVORY SOFT-LINED

LAMPING : 1 EDISON 3-WAY SOCKET,
150 WATT MAX

FL6194 EBL

HEIGHT : 66"

DIAMETER : 21"

FINISH : EBONY LACQUER

SHADE : OCTOGONAL STRING SHADE IN ECRU
LAMPING : 1 EDISON 3-WAY SOCKET,

150 WATT MAX

PRODUCT INDEX

LAMPS

9530 SVG 26
9531 SVG 26
9532 VGC 32
9532 VGW 31
9533 VGC 32
9533 VGW 31
9534 RG 25
9535 RG 25
9536 RG 25
9537 MKGO 27
9538 MKGO 27
9539 MKGO 27
9540 ALB 24
9541 ALB 24
9542 ALB 24
9543 ALB 24
9544 EBL 38
9545 HBZ 35
9545 PN 35
9546 LO 30
9547 FBN 37
9547 HBS 36
9548 GCF 28
9548 GCS 28
9549 GCF 29
9549 GCS 29
9550 GCD 28
9550 GCS 28
9551 GCD 29
9551 GCF 29
9552 GCC 29
9552 GCS 29
9601 SVG 26

FIXTURES

F2311/6 PN 11
F2311/6 WBZ 11
F2312/8+4 PN 10
F2312/8+4 WBZ 10
F2313/4 PN 13
F2313/4 WBZ 13
F2314/3 PN 12
F2314/3 WBZ 12
F2315/4 PN 12
F2315/4 WBZ 12
F2318/8 JDG 7
F2318/8 MKG 6
F2319/6+3 JDG 5
F2319/6+3 MKG 5
F2320/5 JDG 7
F2320/5 MKG 6
F2322/3 WBZ 8
F2323/3 WBZ 8

FLOOR LAMPS

FL6193 VGC 32
FL6193 VGW 31
FL6194 EBL 38
FL6195 HBZ 35
FL6195 PN 35
FL6196 HBZ 33
FL6196 PN 33
FL6197 LO 30
FL6198 FBN 37
FL6198 HBS 36

FLUSH MOUNTS

FM285 FC 4
FM286 FC 4
FM287 FC 4
FM288 WBZ 9

OUTDOOR LAMPS

OL6100 BSB 18
OL6101 BSB 18
OL6102 BSB 18
OL6103 BSB 18
OL6106 BSB 19
OL6107 BSB 19
OL6111 BSB 19
OL6113 BSB 19
OL6201 WZC 20
OL6202 WZC 20
OL6203 WZC 21
OL6204 WZC 20
OL6205 WZC 20
OL6208 WZC 21
OL6209 WZC 21
OL6212 WZC 21
OL6213 WZC 21

PENDANTS

P1128 PN 16
P1129 WBZ 2
P1131 WBZ 9
P1132 WBZ 9
P1133 WBZ 2
P1134 WBZ 2
P1135 WBZ 3

TORCHIERES

T1162 HBZ 34
T1162 PN 34
T1163 LO 30

VANITIES

VS13301 PN 14
VS13301 WBZ 14
VS13302 PN 15
VS13302 WBZ 15
VS13303 PN 15
VS13303 WBZ 15
VS13501 PN 16
VS13502 PN 17
VS13503 PN 17
VS13601 WBZ 3
VS13602 WBZ 3
VS13603 WBZ 3

WALL BRACKETS

WB1340 HBZ 34
WB1340 PN 34
WB1356 PN 10
WB1356 WBZ 10
WB1357 PN 13
WB1357 WBZ 13
WB1358 PN 14
WB1358 WBZ 14
WB1359 PN 11
WB1359 WBZ 11
WB1360 PN 14
WB1360 WBZ 14
WB1367 JDG 7
WB1367 MKG 6



©2007 Martha Stewart Living Omnimedia, Inc. All Rights Reserved.



MARTHA STEWART LIGHTING

New York / High Point / Dallas / Las Vegas

For further information: 800-969-FEIS (3347)

www.feiss.com

Generation Brands™