

STARSTRAND™

Led Tape Lighting Solutions

Counter, Accent & Task Lighting Solutions



Contemporary Lighting™



Contemporary Lighting™

ET2 Contemporary Lighting's full line of under cabinet lighting fixtures and StarStrand™ LED Tape Lighting Systems cast the perfect light throughout the home. In kitchens, granite countertops sparkle under the direct beam and food preparation becomes safer and more enjoyable. In bathrooms and studies, they brighten the room with a warm indirect glow. They even eliminate unwanted shadows in wet bars, curio cabinets, and bookcases with sleek profiles that conceal so discreetly you will never see the source of the gentle light.

StarStrand LED Tape Lighting

Elite 24	3
Ultima 24	5
RGB 24	7
Aqua 24	9
RGB Aqua 24	11
Channel 24	13
RGB Channel 24	15
Basic	17
Super	19
Ultra	21
Maximum Run Chart	23
Drivers	24
Layout Diagrams	27, 29
Installation and Design Guidelines	28, 30
Displays	33

Under Cabinet Lighting

ET-LED-A Series	31
LED Under Cabinet Lighting	
ET-LED-B Series	32
LED Under Cabinet Lighting	



All Under Cabinet and StarStrand™ electrical products are certified and listed to UL/ETL standards for use in U.S.A. and Canada.

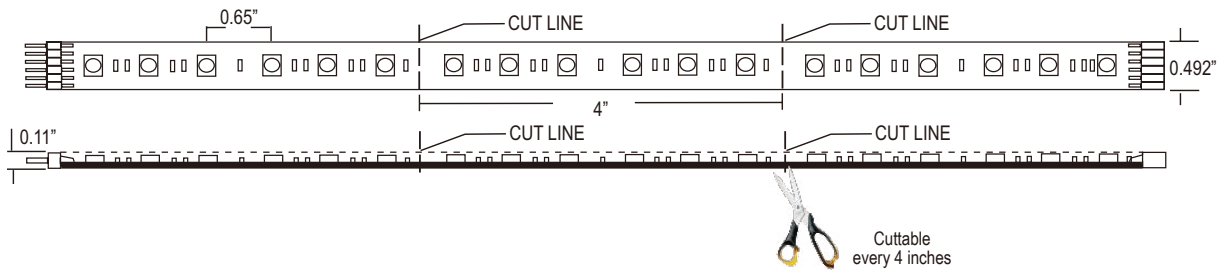
StarStrand™ Elite 24

Features

- High lumen light output
- Long runs up to 75 feet
- Plastic covered to reduce static failure
- Multiple lengths with soldered connectors for trouble free installation
- ETL approved for damp locations
- Highly flexible material that is backed with 3M adhesive tape for easy installation
- Field cuttable every 4 inches

Applications

- Cove and toe kick accent lighting
- Outdoor covered porch and patio
- Under cabinet lighting
- Step lighting
- Restaurants and lounges
- Boats and RV



Item	Length	Diodes	Wattage	Lumens	Color Temp	CRI	PC Board	Beam	Voltage	Current
E53430	4"	6	0.96	24	3500 K	70-75	Black	120°	24V	40mA
E53431	1'	18	2.88	71	3500 K	70-75	Black	120°	24V	120mA
E53432	5'	90	14.4	355	3500 K	70-75	Black	120°	24V	600mA
E53433	10'	180	28.8	711	3500 K	70-75	Black	120°	24V	1.2A
E53434	20'	360	57.6	1421	3500 K	70-75	Black	120°	24V	2.4A

Maximum Run Using

Model Number	Wattage	Maximum Run	2 Output Cords	Wiring Diagram
E53303	30 Watts	10'	1
E53311, E53313, E53318	60 Watts	20'	1
E53320	75 Watts	26'	1
E53286	96 Watts	33'	1
E53314	100 Watts	33'	1
E53287	150 Watts	50'	1
E53288	320 Watts	75'	105'	1
E53289	480 Watts	75'	150'	6

3500 K 120°	
Distance	Foot Candles
12in	23.78
24in	6.77
36in	3.12
48in	1.83

Shown using 1 foot section of Elite 24

Wiring Diagram on page 27



24V Dimming Controller



E53393

- Full range dimming and on/off
- RF remote included
- Installs between driver and first section of tape

6-Pin 4-Way Connector



E53350

- Allows for L, T & X installations
- A power block for branching
- Includes one male to male adapter and two male end caps

6-Pin Connecting Cords



E53465 5"

E53467 13"

E53468 73"

- Extend distance between driver & tape
- Connect sections of tape together

6-Pin 90° Connector



E53464

- For 90° corners, reversible for left or right
- One male end, one female end
- Includes 3M adhesive tape for easy mounting

36" Aluminum Channel



E53274

- Creates valance to conceal tape
- Irregular surfaces installation
- Includes screws for installation

Plastic Wire Clip



E53255

- Used to secure connecting cords & driver output cords to surface
- Backed with 3M adhesive tape
- Package of 10

Mounting Clip



E53273

- Use on irregular surfaces when 3M adhesive tape is not sufficient
- Package of 20

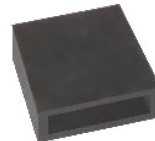
6-Pin Rough In Terminal



E53258

- Rough in for new installation construction
- Female connector on one end, with 2 wire quick connector on opposite end
- Includes one male to male adapter and screw for installation

6-Pin Silicone End Cap



E53469

- Placed on run termination
- Protects against dust & damage
- Package of 10

Drivers

(See page 25-26 for detailed driver information)

E53303	24V 30w Class II Driver
E53311	24V 60w Class II Dimmable Driver
E53313	24V 60w Class II Plug-In Driver
E53318	24V 60w Class II Driver
E53320	24V 75w Class II Plug-In Driver
E53286	24V 96w Class II Driver
E53314	24V 100w Class II Dimmable Driver
E53287	24V 150w Driver
E53288	24V 320w Driver
E53289	24V 480w Driver

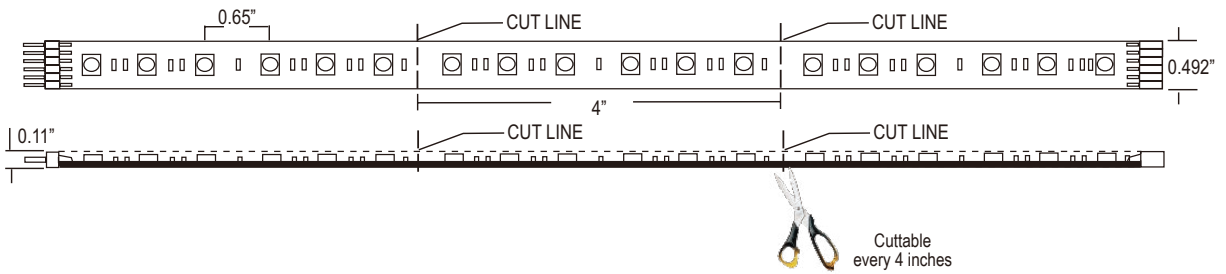
StarStrand™ Ultima 24

Features

- Highest StarStrand lumen light output
- Long runs up to 50 feet
- Plastic covered to reduce static failure
- Multiple lengths with soldered connectors for trouble free installation
- ETL approved for damp locations
- Highly flexible material that is backed with 3M adhesive tape for easy installation
- Field cuttable every 4 inches

Applications

- Office task lighting
- Under cabinet lighting
- Closets
- Work areas
- Display counters
- Steps and railings



Item	Length	Diodes	Wattage	Lumens	Color Temp	CRI	PC Board	Beam	Voltage	Current
E53450	4"	6	1.44	55	3500 K	70-75	White	120°	24V	60mA
E53451	1'	18	4.32	164	3500 K	70-75	White	120°	24V	180mA
E53455	20"	30	7.2	275	3500 K	70-75	White	120°	24V	300mA
E53452	5'	90	21.6	821	3500 K	70-75	White	120°	24V	900mA
E53453	10'	180	43.2	1643	3500 K	70-75	White	120°	24V	1.8A
E53454	20'	360	86.4	3286	3500 K	70-75	White	120°	24V	3.6A

Model Number	Wattage	Maximum Run	Maximum Run Using 2 Output Cords	Wiring Diagram
E53303	30 Watts	6'	1
E53311, E53313, E55318	60 Watts	13'	1
E53320	75 Watts	17'	1
E53286	96 Watts	22'	1
E53314	100 Watts	22'	1
E53287	150 Watts	32'	1
E53288	320 Watts	50'	70'	1
E53289	480 Watts	50'	100'	6

3500 K 120°	
Distance	Foot Candles
12in	51.47
24in	14.47
36in	6.65
48in	3.85

Wiring Diagram on page 27

Shown using 1 foot section of Ultima 24



24V Dimming Controller



E53393

- Full range dimming and on/off
- RF remote included
- Installs between driver and first section of tape

6-Pin 4-Way Connector



E53350

- Allows for L, T & X installations
- A power block for branching
- Includes one male to male adapter and two male end caps

6-Pin Connecting Cords



E53465 5"

E53467 13"

E53468 73"

- Extend distance between driver & tape
- Connect sections of tape together

6-Pin 90° Connector



E53464

- For 90° corners, reversible for left or right
- One male end, one female end
- Includes 3M adhesive tape for easy mounting

36" Aluminum Channel



E53274

- Creates valance to conceal tape
- Irregular surfaces installation
- Includes screws for installation

Plastic Wire Clip



E53255

- Used to secure connecting cords & driver output cords to surface
- Backed with 3M adhesive tape
- Package of 10

Mounting Clip



E53273

- Use on irregular surfaces when 3M adhesive tape is not sufficient
- Package of 20

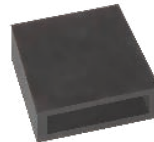
6-Pin Rough In Terminal



E53258

- Rough in for new installation construction
- Female connector on one end, with 2 wire quick connector on opposite end
- Includes one male to male adapter and screw for installation

6-Pin Silicone End Cap



E53469

- Placed on run termination
- Protects against dust & damage
- Package of 10

Drivers

(See page 25-26 for detailed driver information)

E53303	24V 30w Class II Driver
E53311	24V 60w Class II Dimmable Driver
E53313	24V 60w Class II Plug-In Driver
E53318	24V 60w Class II Driver
E53320	24V 75w Class II Plug-In Driver
E53286	24V 96w Class II Driver
E53314	24V 100w Class II Dimmable Driver
E53287	24V 150w Driver
E53288	24V 320w Driver
E53289	24V 480w Driver

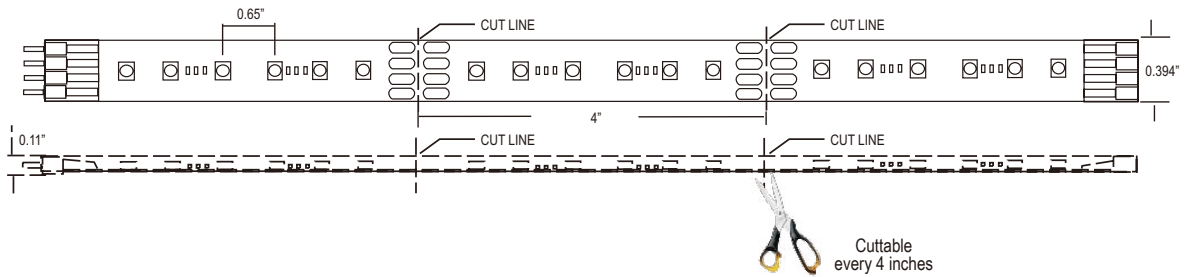
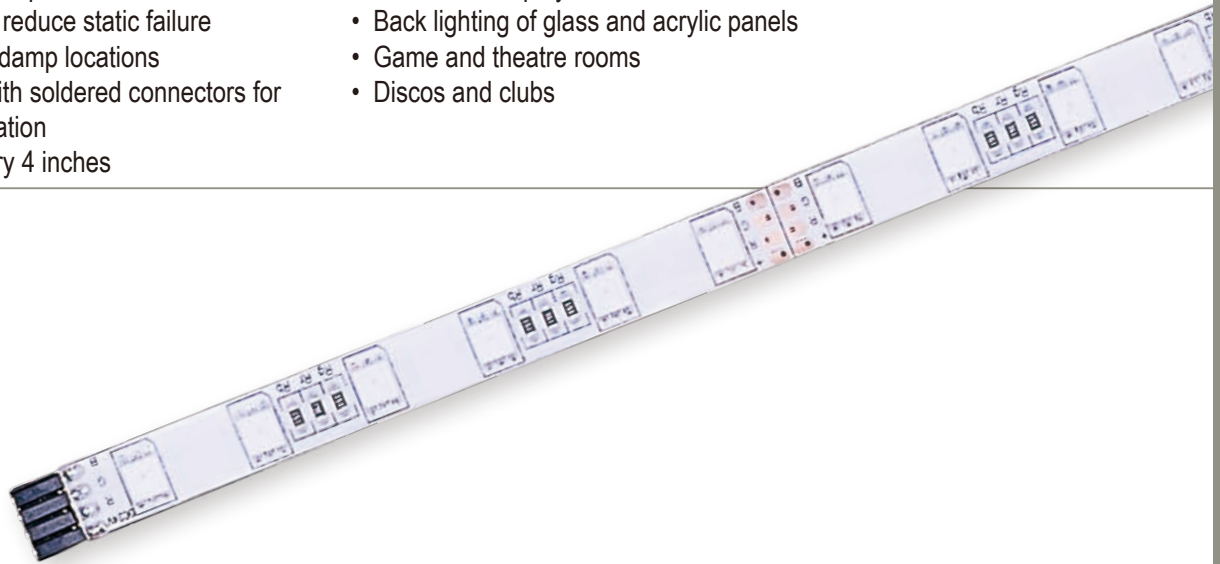
StarStrand™ RGB 24

Features

- Thousands of colors on one tape
- Long runs up to 30 feet
- DMX interface with optional controller
- Plastic covered to reduce static failure
- ETL approved for damp locations
- Multiple lengths with soldered connectors for trouble free installation
- Field cuttable every 4 inches

Applications

- Cove and toe kick accent lighting
- Restaurants, bars and lounges
- Store front displays
- Back lighting of glass and acrylic panels
- Game and theatre rooms
- Discos and clubs



Item	Length	Diodes	Wattage	Lumens	PC Board	Beam	Voltage	Current
E53530	4"	6	1.44	R:18 G:30 B:9	White	120°	24V	60mA
E53531	1'	18	4.32	R:54 G:90 B:27	White	120°	24V	180mA
E53533	5'	90	21.6	R:270 G:450 B:135	White	120°	24V	900mA
E53534	10'	180	43.2	R:540 G:900 B:270	White	120°	24V	1.8A
E53535	20'	360	86.4	R:1080 G:1800 B:540	White	120°	24V	3.6A

Model Number	Wattage	Maximum Run	Wiring Diagram
E53303	30 Watts	6'	3
E53313, E53318	60 Watts	13'	3
E53320	75 Watts	17'	3
E53286	96 Watts	22'	3
E53287	150 Watts	30'	3

Wiring Diagram on page 27



24V RGB Controller



E53385

- Controls color, intensity and speed
- Controls 30' of tape
- RF remote control included
- 4" 6-Pin input cord, 72" 4-Pin output cord

24V DMX512 Interface/Decoder & Standalone RGB Controller



E53387

- Meets DMX512 protocol. Can be used as DMX decoder
- Output power 12 x 48 watts
- RF remote control included
- 4" 6-Pin input cord, 72" 4-Pin output cord

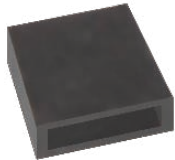
24V RGB Amplifier



E53386

- Used to synchronize multiple RGB24 runs to one controller
- Requires additional driver
- Controls 30' of tape

4-Pin Silicone End Cap



E53269

- Placed on run termination
- Protects against dust & damage
- Package of 10

4-Pin Connecting Cords



E53265 3"

E53266 7"

E53267 13"

E53268 73"

- Extend distance between driver & tape
- Connect sections of tape together

Drivers

(See page 25-26 for detailed driver information)

E53303	24V 30w Class II Driver
E53313	24V 60w Class II Plug-In Driver
E53318	24V 60w Class II Driver
E53320	24V 75w Class II Plug-In Driver
E53286	24V 96w Class II Driver
E53287	24V 150w Driver

RGB 4-Pin Rough In Terminal



E53383

- Rough in for new installations construction
- Female connector on one end, with 4 wire quick connector on opposite end
- Includes one male to male adapter and screw for installation

36" Aluminum Channel



E53274

- Creates valance to conceal tape
- Irregular surfaces installation
- Includes screws for installation

Plastic Wire Clip



E53255

- Used to secure connecting cords & driver output cords to surface
- Backed with 3M adhesive tape
- Package of 10

Mounting Clip



E53272

- Use on irregular surfaces when 3M adhesive tape is not sufficient
- Package of 20

Male End Cap



E53264

- Placed on female end of run termination
- Protects against dust and damage
- Package of 10

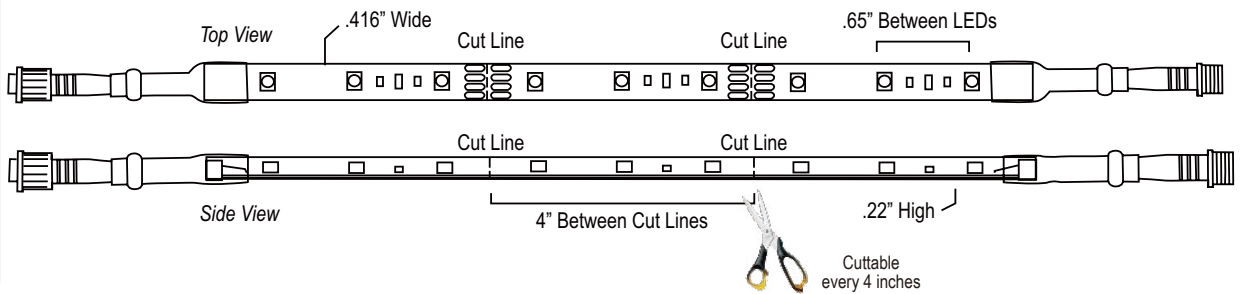
StarStrand™ Aqua 24

Features

- Waterproof IP68 LED tape
- Chemical and UV resistant plastic cover
- Long runs up to 50'
- Installs into aluminum channel or plastic mouting clips
- High lumen double chip LED
- Multiple lengths with watertight IP68 connectors
- Field cuttable every 4 inches

Applications

- Swimming pools and fountains
- Outdoor decks
- Step and stairs
- Landscape lighting
- Outdoor building accent lighting
- Driveway and sidewalk illumination



Item	Length	Diodes	Wattage	Lumens	Color Temp	CRI	PC Board	Beam	Voltage	Current
E53441	2'	36	5.76	192	3500 K	70-75	Black	120°	24V	240mA
E53442	5'	90	14.4	480	3500 K	70-75	Black	120°	24V	600mA
E53443	10'	180	28.8	961	3500 K	70-75	Black	120°	24V	1.2A
E53445	25'	450	72	2402	3500 K	70-75	Black	120°	24V	3A

Model Number	Wattage	Maximum Run	Wiring Diagram
E53380	60 Watts	21'	2
E53316	96 Watts	30'	2
E53381	150 Watts	50'	2

Wiring Diagram on page 27

3500 K 120°	
Distance	Foot Candles
12in	29.54
24in	8.42
36in	3.86
48in	2.2

Shown using 1 foot section of Aqua 24



24V Outdoor Connecting Cords



E53364 48"

E53365 144"

- Extend distance between driver & tape (maximum 24 feet)
- Extend distance between two sections of tape
- IP68 rated for underwater to 10'

60" Aluminum Channel



E53373

- Can be recessed or surface mount
- Silicone sealant required for tape installation (not included)

48" 45° Angle Mounting Channel



E53374

- Surface mount to angle tape for accent lighting
- Aluminum screws included

Silicone End Cap Kit



E53368

- Placed on run termination
- Protects against dust & damage

Mounting Clip



E53370

- Used to secure tape to surface
- Stainless steel screws included
- Clear polycarbonate plastic
- Package of 6

Drivers

(See page 26 for detailed driver information)

E53380 24V 60w Weatherproof Class II Driver

E53316 24V 96w Weatherproof Class II Dimmable Driver

E53381 24V 150w Weatherproof Driver

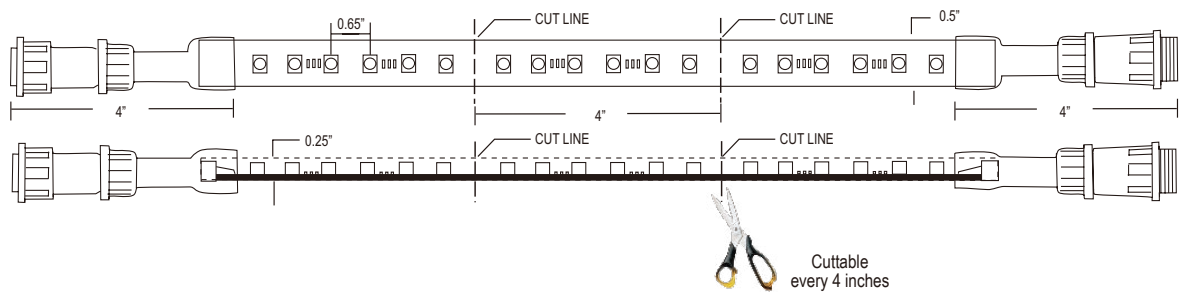
StarStrand™ RGB Aqua 24

Features

- Waterproof IP68 color changing LED tape
- Nine modes of color and movement
- Chemical and UV resistant plastic cover
- Long runs up to 30 feet
- Installs into aluminum channel or plastic mouting clips
- Multiple lengths with watertight IP68 connectors
- Field cuttable every 4 inches

Applications

- Swimming pools and fountains
- Outdoor living areas
- Landscape lighting
- Outdoor architectural features
- Signs
- Outdoor walkways



Item	Length	Diodes	Wattage	Lumens	PC Board	Beam	Voltage	Current
E53541	2'	36	8.64	R:108 G:180 B:54	White	120°	24V	360mA
E53542	5'	90	21.6	R:270 G:450 B:135	White	120°	24V	900mA
E53543	10'	180	43.2	R:540 G:900 B:270	White	120°	24V	1.8A
E53545	25'	450	108	R:1350 G:2250 B:675	White	120°	24V	4.5A

Model Number	Wattage	Maximum Run	Wiring Diagram
E53380	60 Watts	13'	4
E53381	150 Watts	32'	4

Wiring Diagram on page 27

24V Weatherproof RGB Controller



E53389

- Controls color, intensity and speed
- Controls 30' of tape
- RF remote control included
- IP65 rated (not submersible)

24V Weatherproof RGB Amplifier



E53390

- Used to synchronize multiple RGB Aqua 24 runs to one controller
- Requires additional driver
- Controls 30' of tape
- IP65 rated (not submersible)

Outdoor Connecting Cord



E53364 48"

E53365 144"

- Extend distance between driver & tape (maximum 24 feet)
- Extend distance between 2 sections of tape
- IP68 rated for underwater to 10'

60" Aluminum Channel



E53373

- Can be recessed or surface mount
- Silicone sealant required for tape installation (not included)

48" 45° Angle Mounting Channel



E53374

- Surface mount to angle tape for accent lighting
- Aluminum screws included

Silicone End Cap Kit



E53368

- Placed on run termination
- Protects against dust & damage

Mounting Clip



E53370

- Used to secure tape to surface
- Stainless steel screws included
- Clear polycarbonate plastic
- Package of 6

Drivers

(See page 26 for detailed driver information)

E53380 24V 60w Weatherproof Class II Driver

E53381 24V 150w Weatherproof Driver

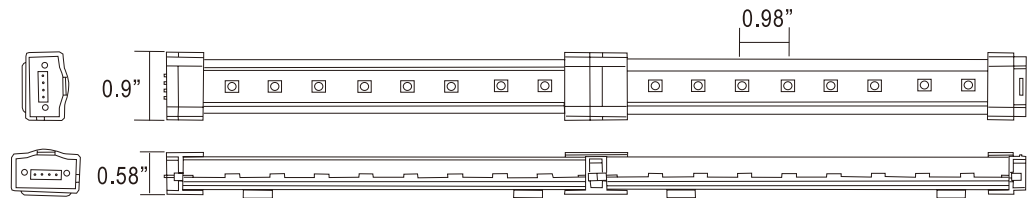
StarStrand™ Channel 24

Features

- High lumen output
- Available in both Bronze and Aluminum finish
- Clear lens for maximum light output
- Rigid aluminum channel conceals light source and provides excellent heat dissipation
- Connect end to end or with the use of connecting cables
- Available in 3500 K or 5000 K
- Includes easy to install mounting clips, both downward and 45° angle

Applications

- Under cabinets and bars
- Office desk task lighting
- Retail display cabinets and counters
- Window displays
- Closet lighting



Item	Length	Diodes	Wattage	Lumens	Color Temp	CRI	Beam	Voltage	Current
E53700-AL, BRZ	6"	10	2.88	70	3500 K	70 - 75	120°	24V	120mA
E53701-AL, BRZ	12"	18	4.32	139	3500 K	70 - 75	120°	24V	180mA
E53702-AL, BRZ	24"	36	8.64	279	3500 K	70 - 75	120°	24V	360mA
E53703-AL, BRZ	36"	54	12.96	418	3500 K	70 - 75	120°	24V	540mA
E53704-AL, BRZ	48"	72	17.28	558	3500 K	70 - 75	120°	24V	720mA
E53710-AL, BRZ	6"	10	2.88	104	5000 K	70 - 75	120°	24V	120mA
E53711-AL, BRZ	12"	18	4.32	207	5000 K	70 - 75	120°	24V	180mA
E53712-AL, BRZ	24"	36	8.64	415	5000 K	70 - 75	120°	24V	360mA
E53713-AL, BRZ	36"	36	12.96	622	5000 K	70 - 75	120°	24V	540mA
E53714-AL, BRZ	48"	48	17.28	830	5000 K	70 - 75	120°	24V	720mA

Model Number	Wattage	Maximum Run	Wiring Diagram
E53303	30 Watts	6'	5
E53311, E53313, E53318	60 Watts	13'	5
E53320	75 Watts	17'	5
E53286	96 Watts	22'	5
E53314	100 Watts	22'	5
E53287	150 Watts	32'	5

Wiring Diagram on page 27

3500 K 120°	
Distance	Foot Candles
12in	43.77
24in	12.01
36in	5.46
48in	3.16

Shown using 1 foot section of Channel 24

5000 K 120°	
Distance	Foot Candles
12in	63.59
24in	17.96
36in	8.27
48in	4.67

Shown using 1 foot section of Channel 24

24V Dimming Controller



E53393

- Full range dimming and on/off
- RF remote included
- Installs between driver and first section of tape

4-Pin Connecting Cords



E53265 3"

E53266 7"

E53267 13"

E53268 73"

- Extend distance between driver & tape
- Connect sections of tape together

Plastic Wire Clip



E53255

- Used to secure connecting cords & driver output cords to surface
- Backed with 3M adhesive tape
- Package of 10

Rough In Terminal Block



E53257 3"

- Rough in for new installation construction
- 3" female connector on one end, with two wire quick connector on the opposite end
- Includes one male to male adapter and screw for installation

4-Pin to 6-Pin Adapter Cord



E53352

- 6-Pin female to 4-Pin male
- Connects 4-Pin 24V system to 6-Pin 24V drivers
- Included in every 24", 36" and 48" section of Channel 24

4-Pin to 6-Pin Adapter Cord with On/Off Switch



E53353

- 6-Pin female to 4-Pin male
- Used when not controlled by wall switch

Mounting Clips



E53354

- Additional clips for mounting Channel 24
- Package of 4
- Included two mounting clips

45° Mounting Clips



E53355

- Additional clips for mounting Channel 24
- Package of 4
- Included two mounting clips

Drivers

(See page 25-26 for detailed driver information)

E53303	24V 30w Class II Driver
E53311	24V 60w Class II Dimmable Driver
E53313	24V 60w Class II Plug-In Driver
E53318	24V 60w Class II Driver
E53320	24V 75w Class II Plug-In Driver
E53286	24V 96w Class II Driver
E53314	24V 100w Class II Dimmable Driver
E53287	24V 150w Driver

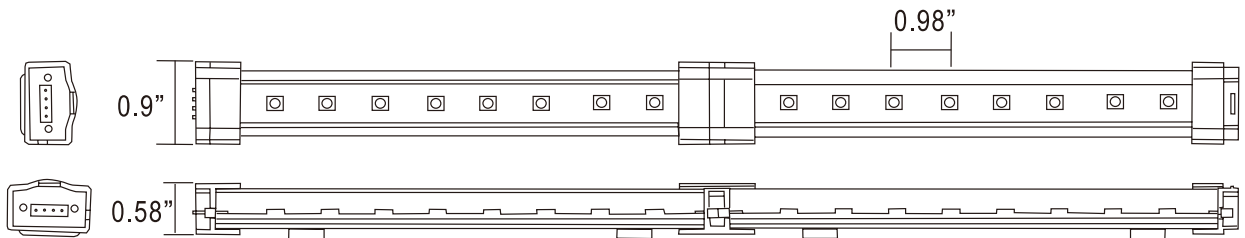
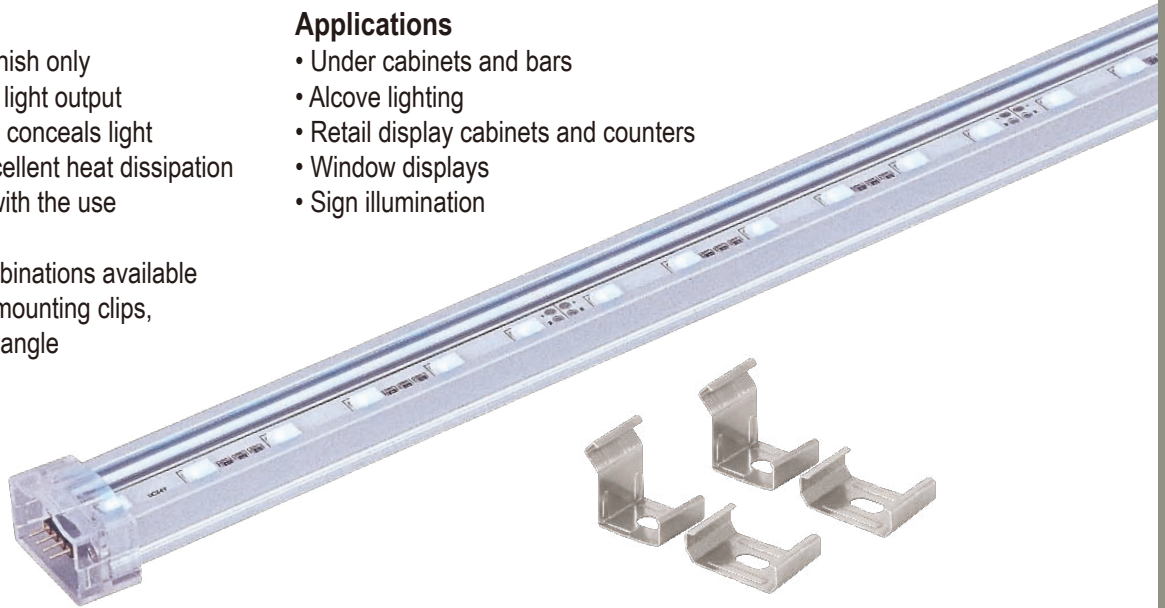
StarStrand™ RGB Channel 24

Features

- Available in Aluminum finish only
- Clear lens for maximum light output
- Rigid aluminum channel conceals light source and provides excellent heat dissipation
- Connect end to end or with the use of connecting cables
- Thousands of color combinations available
- Includes easy to install mounting clips, both downward and 45° angle

Applications

- Under cabinets and bars
- Alcove lighting
- Retail display cabinets and counters
- Window displays
- Sign illumination



Item	Length	Diodes	Wattage	Lumens	Beam	Voltage	Current
E53720-AL	6"	10	2.88	R:30 G:50 B:15	120°	24V	120mA
E53721-AL	12"	18	4.32	R:54 G:90 B:27	120°	24V	180mA
E53722-AL	24"	36	8.64	R:108 G:180 B:30	120°	24V	360mA
E53723-AL	36"	54	12.96	R:162 G:270 B:45	120°	24V	540mA
E53724-AL	48"	72	17.28	R:216 G:360 B:60	120°	24V	720mA

Model Number	Wattage	Maximum Run	Wiring Diagram
E53303	30 Watts	6'	5
E53313, E53318	60 Watts	13'	5
E53320	75 Watts	17'	5
E53286	96 Watts	22'	5
E53287	150 Watts	30'	5

Wiring Diagram on page 27

24V RGB Controller



E53385

- Controls color, intensity and speed
- Controls 30' of tape
- RF remote control included
- 4" 6-Pin input cord, 72" 4-Pin output cord

24V DMX512 Interface/Decoder & Standalone RGB Controller



E53387

- Meets DMX512 protocol. Can be used as DMX decoder
- Output power 12 x 48 watts
- RF remote control included
- 4" 6-Pin input cord, 72" 4-Pin output cord

24V RGB Amplifier



E53386

- Used to synchronize multiple RGB Channel 24 runs to one controller
- Requires additional driver
- Controls 30' of tape

4-Pin Connecting Cords



E53265 3"

E53266 7"

E53267 13"

E53268 73"

- Extend distance between driver & tape
- Connect sections of tape together

RGB 4-Pin Rough In Terminal



E53383

- Rough in for new installation construction
- Female connector on one end, with two wire quick connector on opposite end
- Includes one male to male adapter and screw for installation

Plastic Wire Clip



E53255

- Used to secure connecting cords & driver output cords to surface
- Backed with 3M adhesive tape
- Package of 10

Mounting Clips



E53354

- Additional clips for mounting RGB Channel 24
- Package of 4
- Included two mounting clips

45° Mounting Clips



E53355

- Additional clips for mounting RGB Channel 24
- Package of 4
- Included two mounting clips

Drivers

(See page 25-26 for detailed driver information)

- E53303** 24V 30w Class II Driver
- E53313** 24V 60w Class II Plug-In Driver
- E53318** 24V 60w Class II Driver
- E53320** 24V 75w Class II Plug-In Driver
- E53286** 24V 96w Class II Driver
- E53287** 24V 150w Driver

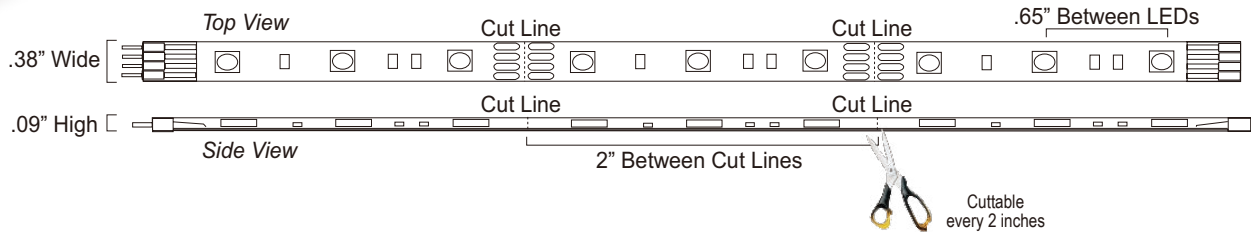
StarStrand™ Basic

Features

- Low power consumption only
1.4 watts per foot
- Warm but not yellow 3500 K color
- Highly flexible material that is backed with 3M adhesive tape for easy installation
- No heat and no UV radiation
- Supplied in 16'4" continuous lengths and can be field cut every 2"
- Soldered connectors supplied on each end
- Additional two power feeds and one splicer supplied.

Applications

- Cove and toe kick accent lighting
- Cabinet lighting
- Architectural features
- Point of purchase displays
- Backlighting of signs and displays
- Wine cellars
- Closets



Item	Length	Diodes	Wattage	Lumens	Color Temp	CRI	PC Board	Beam	Voltage	Current
E53201	16 ft. 4 in.	300	24	847	3500 K	70-75	Copper	120°	12V	2A

Model Number	Wattage	Maximum Run	Wiring Diagram
E53302	30 Watts	20'	7
E53275, E53304, E53310	60 Watts	33'	7

Wiring Diagram on page 29

3500 K 120°	
Distance	Foot Candles
12in	16.55
24in	4.61
36in	2.06
48in	1.21

Shown using 1 foot section of Basic



4-Pin Connecting Cords



E53265 3"
E53266 7"
E53267 13"
E53268 73"

- Extend distance between driver & tape
- Connect sections of tape together

Flexible Connector



E53259

- Use for corners and angles
- Package of 6

End Power Feed



E53260

- Required if tape is cut
- Two included with E53201
- Package of 6

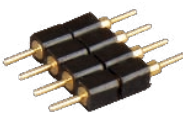
Tape Splicer



E53261

- Joins two sections if tape is cut
- One included with E53201
- Package of 10

Male/Male Adapter



E53262

- Changes female end to male
- Package of 10

4-Way Connector



E53263

- Allows for L, T & X installations
- A power block for branching
- Includes two E53264 and one E53262

Male End Cap



E53264

- Placed on female end of run termination
- Protects against dust and damage
- Package of 10

Drivers

(See page 24 for detailed driver information)

E53302	12V 30w Class II Driver
E53275	12V 60w Class II Plug-In Driver
E53304	12V 60w Class II Driver
E53310	12V 60w Class II Dimmable Driver

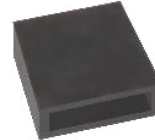
Indoor Dimming Controller



E53282

- Full range dimming & On/Off control
- RF remote control included

4-Pin Silicone End Cap



E53269

- Placed on run termination
- Protects against dust & damage
- Package of 10

Plastic Wire Clip



E53255

- Used to secure connecting cords & driver output cords to surface
- Backed with 3M adhesive tape
- Package of 10

Heat Shrink Wrap



E53256

- Secure connections when in walls
- Waterproof in damp location installations
- Heat gun required for installation
- Package of 10

Rough In Terminal Block



E53257 3"

- Rough in for new installation construction
- 3" female connector on one end, with two wire quick connector on the opposite end
- Includes one male to male adapter and screw for installation

36" Aluminum Channel



E53254

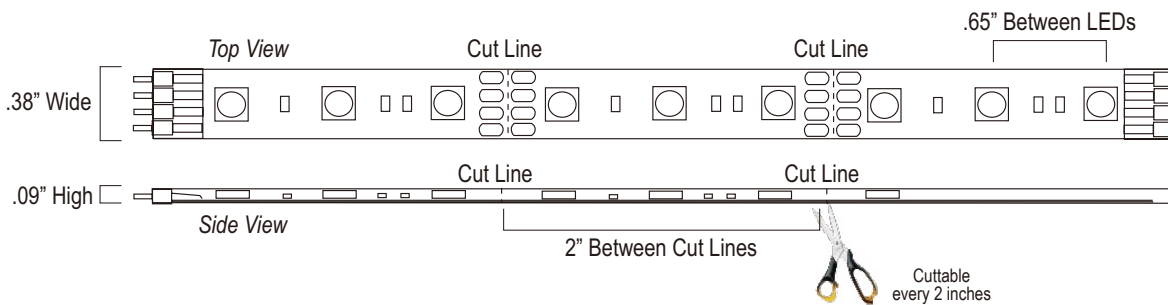
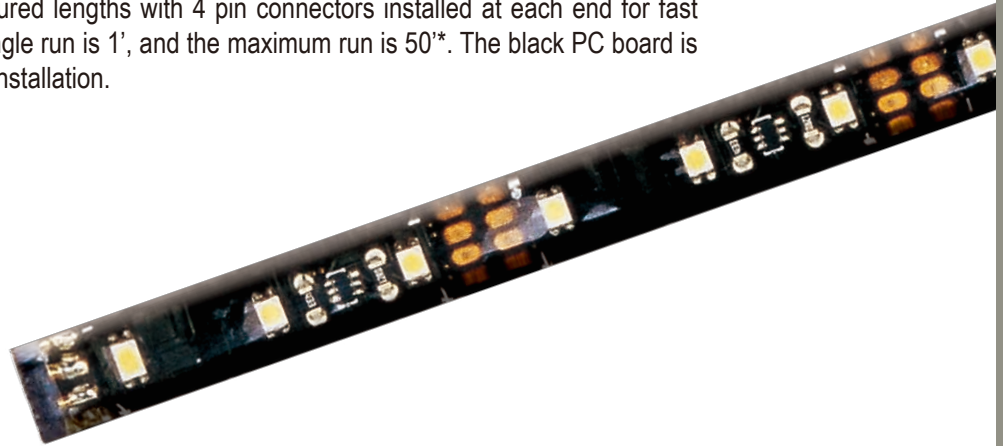
- Creates valance to conceal tape
- Irregular surfaces installation
- Includes screws for installation

StarStrand™ Super

With over twice the lumen output of the basic tape, and the added benefit of it being covered in a pliable clear plastic, StarStrand™ Super Star, with StarChip™ technology, excels in performance and durability. The plastic cover keeps dust and dirt from landing directly on the board and makes keeping it clean easy. Super Star is available in pre-manufactured lengths with 4 pin connectors installed at each end for fast and sure in - stallation. The minimum single run is 1', and the maximum run is 50'*. The black PC board is backed with 3M adhesive tape for easy installation.

Applications

- Laminated LED tape system
- No exposed circuit board
- Easy to install with multiple lengths to choose from
- Warm color temperature enhances room interiors
- Perfect for accent lighting in alcoves, toe-kick, and under counter
- Flexible design that forms to contours
- Safe and economical to operate
- Long life LED average 50,000 hours life
- Tested to UL standards for both US and Canada



Item	Length	Diodes	Wattage	Lumens	Color Temp	CRI	PC Board	Beam	Voltage	Current
E53210	2"	3	0.48	12	3500 K	70-75	Black	120°	12V	40mA
E53211	1'	18	2.88	71	3500 K	70-75	Black	120°	12V	120mA
E53212	5'	90	14.4	355	3500 K	70-75	Black	120°	12V	1.2A
E53213	10'	180	28.8	710	3500 K	70-75	Black	120°	12V	2.4A
E53214	20'	360	57.6	1420	3500 K	70-75	Black	120°	12V	4.8A

Model Number	Wattage	Maximum Run	Maximum Run Using 4 Way Connector*	Wiring Diagram
E53302	30 Watts	10'	8
E53275, E53304, E53310	60 Watts	21'	8
E53306	96 Watts	25'	34'	8
E53277	150 Watts	25'	50'	8

Wiring Diagram on page 29

3500 K 120°	
Distance	Foot Candles
12in	40.41
24in	12.16
36in	6.33
48in	3.84

Shown using 1 foot section of Super

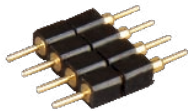
Indoor Dimming Controller



E53282

- Full range dimming & On/Off control
- RF remote control included
- 140w Max

Male/Male Adapter



E53262

- Changes female end to male
- Package of 10

3' Aluminum Channel



E53254

- Creates valance to conceal tape
- Irregular surfaces installation
- Includes screws for installation

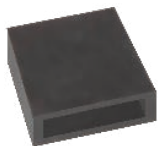
4-Way Connector



E53263

- Allows for L, T & X installations
- A power block for branching
- Includes two E53264 and one E53262

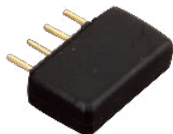
Silicone End Cap



E53269

- Placed on run termination
- Protects against dust and damage
- One included in E53212, E53213 & E53214
- Package of 10

Male End Cap



E53264

- Placed on female end of run termination
- Protects against dust and damage
- Package of 10

Drivers

(See page 24 for detailed driver information)

E53302	12V 30w Class II Driver
E53275	12V 60w Class II Plug-In Driver
E53304	12V 60w Class II Driver
E53310	12V 60w Class II Dimmable Driver
E53306	12V 96w Class II Driver
53277E	12V 150w Driver

Plastic Wire Clip



E53255

- Used to secure connecting cords & driver output cords to surface
- Backed with 3M adhesive tape
- Package of 10

Mounting clip



E53272

- Use on irregular surfaces when 3M tape is not sufficient
- Package of 20

Heat Shrink Wrap



E53256

- Secure Connections when in walls
- Waterproof in damp location installations
- Heat gun required for installation
- Package of 10

Rough In Terminal Block



E53257 3"

- Rough in for new installations construction
- Female connector on one end, with 4 wire quick connector on opposite end

Indoor Connecting Cords



E53265 3"

E53266 7"

E53267 13"

E53268 73"

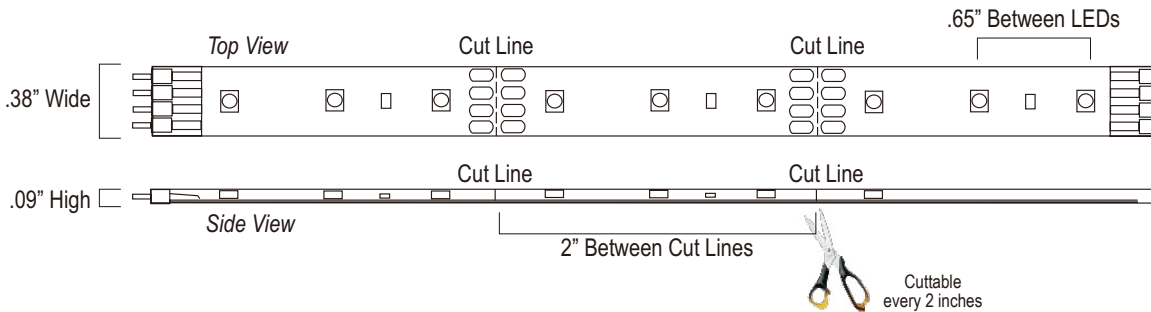
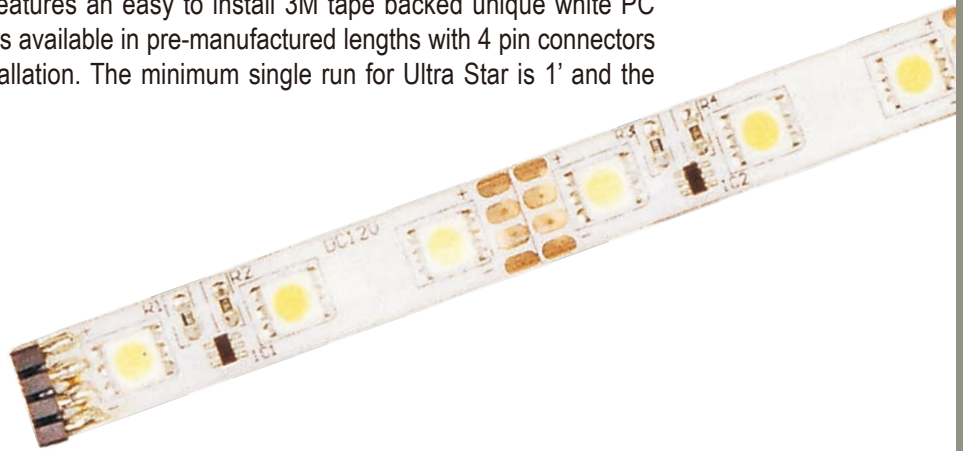
- Extend distance between driver and tape
- Connect sections of tape together

StarStrand™ Ultra

StarStrand™ Ultra Star, with StarChip™ technology, is for applications requiring additional light output. Ultra Star produces over 3 times the lumens of Basic Star and 50% more than Super Star. This product is also covered with a pliable plastic and features an easy to install 3M tape backed unique white PC board for ultimate light reflection. Ultra Star is available in pre-manufactured lengths with 4 pin connectors installed at each end for fast and sure installation. The minimum single run for Ultra Star is 1' and the maximum run is 32'*.

Applications

- High lumen laminated LED tape system
- No exposed circuit board
- Easy to install with multiple lengths to choose from
- Warm color temperature enhances room interiors
- Perfect for task applications in under counter, and general room illumination
- Flexible design that forms to contours
- Safe and economical to operate
- Long life LED average 50,000 hours life
- Tested to UL standards for both US and Canada



Item	Length	Diodes	Wattage	Lumens	Color Temp	CRI	PC Board	Beam	Voltage	Current
E53220	2"	3	0.72	27	3500 K	70-75	White	120°	12V	60mA
E53221	12"	18	4.32	164	3500 K	70-75	White	120°	12V	360mA
E53224	18"	27	6.48	246	3500 K	70-75	White	120°	12V	540mA
E53222	5'	90	21.6	820	3500 K	70-75	White	120°	12V	1.8A
53223E	10'	180	43.2	1640	3500 K	70-75	White	120°	12V	3.6A

Model Number	Wattage	Maximum Run	Maximum Run Using 4 Way Connetor*	Wiring Diagram
E53302	30 Watts	6'	8
E53275, E53304, E53310	60 Watts	14'	8
E53306	96 Watts	16'	23'	8
E53277	150 Watts	16'	32'	8

Wiring Diagram on page 29

3500 K 120°	
Distance	Foot Candles
12in	73.86
24in	21
36in	10.74
48in	6.58

Shown using 1 foot section of Ultra

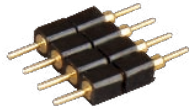


Indoor Dimming Controller



- E53282**
- Full range dimming &
 - On/Off control
 - RF remote control included
 - 140w Max

Male/Male Adapter



- E53262**
- Changes female end to male
 - Package of 10

3' Aluminum Channel



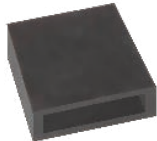
- E53254**
- Creates valance to conceal tape
 - Irregular surfaces installation
 - Includes screws for installation

4-Way Connector



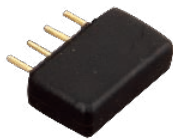
- E53263**
- Allows for L, T & X installations
 - A power block for branching
 - Includes two E53264 and one E53262

Silicone End Cap



- E53269**
- Placed on run termination
 - Protects against dust and damage
 - One included in E53222 & E53223
 - Package of 10

Male End Cap



- E53264**
- Placed on female end of run termination
 - Protects against dust and damage
 - Package of 10

Drivers

(See page 24 for detailed driver information)

- | | |
|---------------|----------------------------------|
| E53302 | 12V 30w Class II Driver |
| E53275 | 12V 60w Class II Plug-In Driver |
| E53304 | 12V 60w Class II Driver |
| E53310 | 12V 60w Class II Dimmable Driver |
| E53306 | 12V 96w Class II Driver |
| E53277 | 12V 150w Driver |

Plastic Wire Clip



- E53255**
- Used to secure connecting cords & driver output cords to surface
 - Backed with 3M adhesive tape
 - Package of 10

Mounting clip



- E53272**
- Use on irregular surfaces when 3M tape is not sufficient
 - Package of 20

Heat Shrink Wrap



- E53256**
- Secure Connections when in walls
 - Waterproof in damp location installations
 - Heat gun required for installation
 - Package of 10

Rough In Terminal Block



- E53257 3"**
- Rough in for new installations construction
 - Female connector on one end, with 4 wire quick connector on opposite end

Indoor Connecting Cords



- E53265 3"**
E53266 7"
E53267 13"
E53268 73"
- Extend distance between driver and tape
 - Connect sections of tape together

Maximum Run Chart

Series	Driver Wattage	Driver Models	Max Run	Max Run Using 2-Cord Output	Max Run Using 4-Way Connector*
Basic	30 Watts	E53302	20 Feet
	60 Watts	E53275, E53304, E53310	33 Feet
Super	30 Watts	E53302	10 Feet
	60 Watts	E53275, E53304, E53310	21 Feet
	96 Watts	E53306	25 Feet	34 Feet
	150 Watts	E53277	25 Feet	50 Feet
Ultra	30 Watts	E53302	6 Feet
	60 Watts	E53275, E53304, E53310	14 Feet
	96 Watts	E53306	16 Feet	23 Feet
	150 Watts	E53277	16 Feet	32 Feet
Elite 24	30 Watts	E53303	10 Feet
	60 Watts	E53311, E53313, E53318	20 Feet
	75 Watts	E53320	26 Feet
	96 Watts	E53286	33 Feet
	100 Watts	E53314	33 Feet
	150 Watts	E53287	50 Feet
	320 Watts	E53288	75 Feet	105 Feet
	480 Watts	E53289	75 Feet	150 Feet
Ultima 24	30 Watts	E53303	6 Feet
	60 Watts	E53311, E53313, E53318	13 Feet
	75 Watts	E53320	17 Feet
	96 Watts	E53286	22 Feet
	100 Watts	E53314	22 Feet
	150 Watts	E53287	32 Feet
	320 Watts	E53288	50 Feet	70 Feet
	480 Watts	E53289	50 Feet	100 Feet
RGB 24	30 Watts	E53303	6 Feet
	60 Watts	E53313, E53318	13 Feet
	75 Watts	E53320	17 Feet
	96 Watts	E53286	22 Feet
	150 Watts	E53314	30 Feet
Aqua 24	60 Watts	E53380	21 Feet
	96 Watts	E53316	30 Feet
	150 Watts	E53381	50 Feet
RGB Aqua 24	60 Watts	E53380	13 Feet
	150 Watts	E53381	32 Feet
Channel 24	30 Watts	E53303	6 Feet
	60 Watts	E53311, E53313, E53318	13 Feet
	75 Watts	E53320	17 Feet
	96 Watts	E53286	22 Feet
	100 Watts	E53314	22 Feet
	150 Watts	E53287	32 Feet
RGB Channel 24	30 Watts	E53303	6 Feet
	60 Watts	E53313, E53318	13 Feet
	75 Watts	E53320	17 Feet
	96 Watts	E53286	22 Feet
	150 Watts	E53287	30 Feet

*4-Pin 4-Way Connector (E53263)



12V 30w Class II Driver



E53302

5.7"L x 1.9"W x 1.2"H

- Electronic direct wire driver
- 120V-264V input
- 12V, 2.5A output
- Short circuit protection, overload protection, over voltage protection
- Constant current
- Operating temperature: -4°F to 140°F
- IP64 rated
- Includes 72" 4-Pin output cord
- Class II UL1310, UL-RU certified

12V 60w Class II Driver



E53305

7"L x 2.5"W x 1.5"H

- Electronic direct wire driver
- 120V-264V input
- 12V, 5A output
- Short circuit protection, overload protection, over temperature, over voltage protection
- Power factor control, constant current
- Operating temperature: -22°F to 122°F
- Includes 72" 4-Pin output cord
- Class II UL 1310, UL-RU certified

12V 60w Class II Plug-In Driver



E53275

4.75"L x 2"W x 1.25"H

- Electronic plug-in driver
- 120V-240V input
- 12V, 5A output
- Short circuit protection, overload protection, over voltage protection
- Operating temperature: 32°F to 104°F
- Includes 72" 4-Pin output cord
- Class II, UL certified

12V 96w Class II Driver



E53306

8"L x 3.8"W x 1.5"H

- Electronic direct wire driver
- 120V-264V input
- 12V, 5A output
- Short circuit protection, overload protection, over temperature, over voltage protection
- Power factor control, constant current
- Operating temperature: -22°F to 122°F
- Includes 72" 4-Pin output cord
- Class II UL 1310, UL-RU certified

12V 60w Class II Driver



E53304

7.1"L x 2.4"W x 1.4"H

- Electronic direct wire driver
- 120V-264V input
- 12V, 5A output
- Short circuit protection, overload protection, over voltage protection
- Constant current
- Operating temperature: -4°F to 140°F
- IP64 rated
- Includes 72" 4-Pin output cord
- Class II UL 1310, UL-RU certified

12V 150w Drive



E53277

7.75"L x 3.75"W x 1.5"H

- Electronic direct wire driver
- 120V/240V input
- 12V, 12.5A output
- Short circuit protection, overload protection, over voltage protection
- Operating temperature: 14°F to 140°F
- Includes 72" 4-Pin output cord
- UL 1012, UL-RU certified

12V Dimmable Driver

12V 60w Class II Dimmable Driver



E53310

6.95"L x 3.75"W x 3"H

- Magnetic direct wire driver
- 120V/240V/277V input
- 12V, 5A output
- Short circuit protection, overload protection
- Includes 72" 4-Pin output cord
- Class II
- Requires magnetic low voltage dimmer (not included)
- ETL certified

24V Driver

24V 30w Class II Driver



E53303

5.7"L x 1.9"W x 1.2"H

- Electronic direct wire driver
- 120V-264V input
- 24V, 1.25A output
- Short circuit protection, overload protection, over voltage protection
- Constant current
- Operating temperature: -4°F to 140°F
- IP64 rated
- Includes 72" 6-Pin output cord
- Class II UL 1310, UL-RU certified

24V 96w Class II Driver



E53286

8"L x 3.8"W x 1.5"H

- Electronic direct wire driver
- 120V-264V input
- 24V, 4A output
- Short circuit protection, overload protection, over temperature, over voltage protection
- Power factor control, constant current
- Operating temperature: -22°F to 122°F
- Includes 72" 6-Pin output cord
- Class II UL 1310, UL-RU certified

24V 60w Class II Plug-In Driver



E53313

Electronic plug-in driver

- 120V-240V input
- 24V, 2.5A output
- Short circuit protection, overload protection, over voltage protection
- Operating temperature: 32°F to 104°F
- Includes 72" 6-Pin output cord
- Class II

24V 150w Driver



E53287

7.75"L x 3.75"W x 1.5"H

- Electronic direct wire driver
- 120V/240V input
- 24V, 6.5A output
- Short circuit protection, overload protection, over voltage protection
- Operating temperature: 14°F to 140°F
- Includes 72" 6-Pin output cord
- UL 1012, UL-RU certified

24V 60w Class II Driver



E53318

7.1"L x 2.4"W x 1.4"H

- Electronic direct wire driver
- 120V-264V input
- 24V, 2.5A output
- Short circuit protection, overload protection, over voltage protection
- Constant current
- Operating temperature: -4°F to 140°F
- IP64 rated
- Includes 72" 6-Pin output cord
- Class II UL 1310, UL-RU certified

24V 320w Driver



E53288

8.5"L x 4.5"W x 2.25"H

- Electronic direct wire driver
- 120V/240V input
- 24V, 12.5A output
- Short circuit protection, overload protection, over temperature, over voltage protection
- Operating temperature: 14°F to 140°F
- Includes two 72" 6-Pin output cords
- UL 60950-1, UL-RU certified

24V 75w Class II Plug-In Driver



E53320

Electronic plug-in driver

- 120V-264V input
- 24V, 3A output
- Short circuit protection, overload protection, over voltage protection
- Operating temperature: 32°F to 104°F
- Includes 72" 6-Pin output cord
- Class II

24V 480w Driver



E53289

11"L x 5"W x 1.7"H

- Electronic direct wire driver
- 120V-264V input
- 24V, 20A output
- Short circuit protection, overload protection, over temperature, over voltage protection
- Power Factor Control, Constant current
- Operating temperature: -4°F to 140°F
- Includes two 72" 6-Pin output cords
- UL 60950-1, UL-RU certified

24V Weatherproof Drivers

24V 96w Weatherproof Class II Dimmable Driver

E53316

11.25"L x 3.375"W x 3.25"H

- Magnetic direct wire driver
- 120V input
- 24V, 4A output
- Overload protection
- Operating temperature: -22°F to 140°F
- Includes 72" weatherproof output cord
- Class II UL 1310, UL-RU certified
- Requires magnetic low voltage dimmer (not included)



24V 150w Weatherproof Driver

E53381

8.75"L x 2.75"W x 1.5"H

- Electronic direct wire driver
- 120V-277V input
- 24V, 6.3A output
- Short circuit protection, overload protection, over temperature, over voltage protection
- Power factor control, constant current
- Operating temperature: -22°F to 158°F
- IP67 rated
- Includes 72" weatherproof output cord
- Class II UL 1012, 60950-1, UL-RU certified



24V 60w Weatherproof Class II Driver

E53380

7.75"L x 2.5"W x 1.5"H

- Electronic direct wire driver
- 120V-277V input
- 24V, 2.5A output
- Short circuit protection, overload protection, over temperature, over voltage protection
- Power factor control, constant current
- Operating temperature: -22°F to 158°F
- IP67 rated
- Includes 72" weatherproof output cord
- Class II UL 879, 8750, 1310, UL-RU certified



24V Dimmable Drivers

24V 60w Class II Dimmable Driver

E53311

6.95"L x 3.75"W x 3"H

- Magnetic direct wire driver
- 120V/240V/277V input
- 24V, 2.5A output
- Short circuit protection, overload protection
- Includes 72" 6-Pin output cord
- Class II, ETL certified
- Requires magnetic low voltage dimmer (not included)



24V 96w Weatherproof Class II Dimmable Driver

E53316

11.25"L x 3.375"W x 3.25"H

- Magnetic direct wire driver
- 120V input
- 24V, 4A output
- Overload protection
- Operating temperature: -22°F to 140°F
- Includes 72" weatherproof output cord
- Class II UL 1310, UL-RU certified
- Requires magnetic low voltage dimmer (not included)



24V 100w Class II Dimmable Driver

E53314

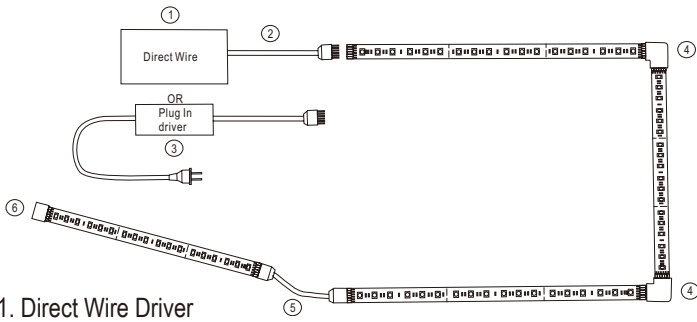
6.1"L x 2.6"W x 2.2"H

- Magnetic direct wire driver
- 120V input
- 24V, 4A output
- Short circuit protection, overload protection
- Operating temperature: -22°F to 140°F
- Includes 72" 6-Pin output cord
- Class II UL 2108, ETL certified
- Requires magnetic low voltage dimmer (not included)



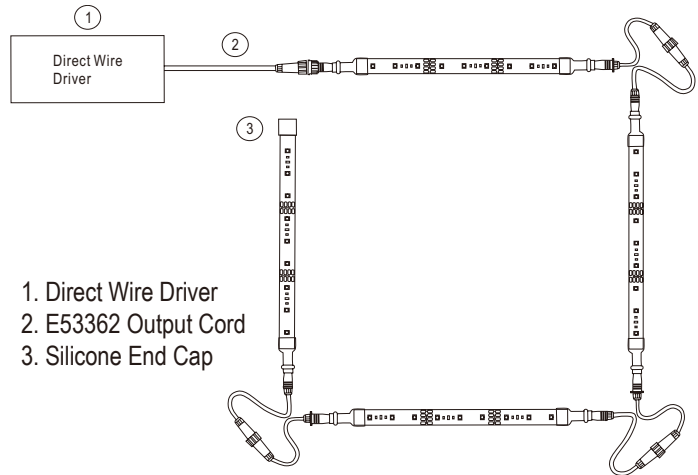
24V Diagram

1. Elite/Ultima 24



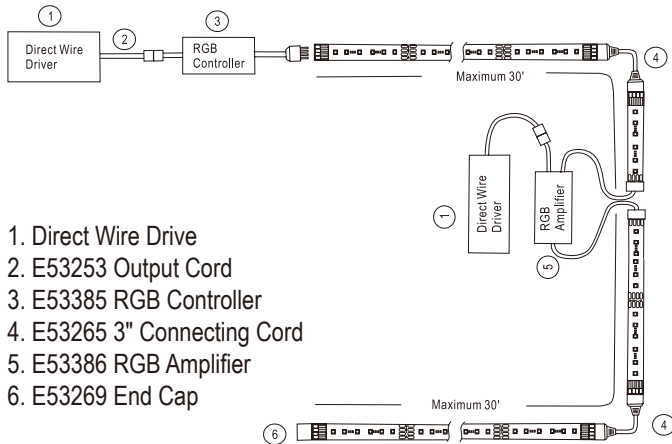
1. Direct Wire Driver
2. E53253 Output Cord
3. E53320 Plug in Driver
4. E53464 90° connector
5. E53465 5" Connector cord
6. E53469 End Cap

2. Aqua 24



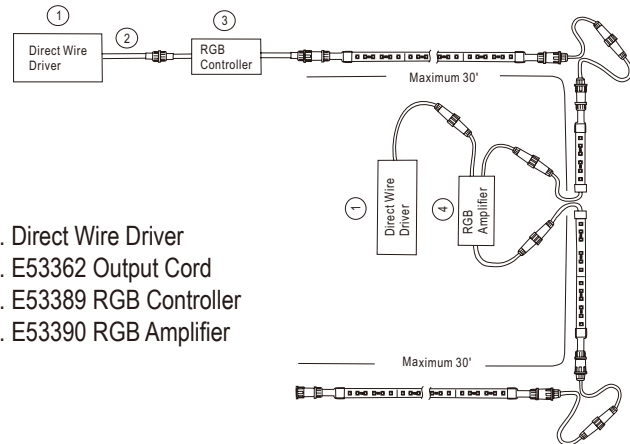
1. Direct Wire Driver
2. E53362 Output Cord
3. Silicone End Cap

3. RGB 24



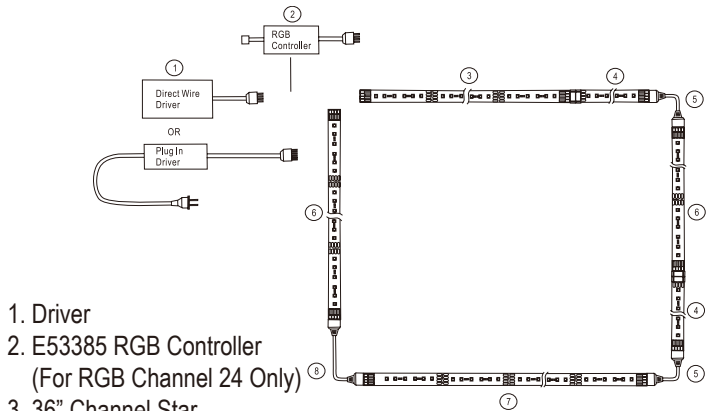
1. Direct Wire Drive
2. E53253 Output Cord
3. E53385 RGB Controller
4. E53265 3" Connecting Cord
5. E53386 RGB Amplifier
6. E53269 End Cap

4. RGB Aqua 24



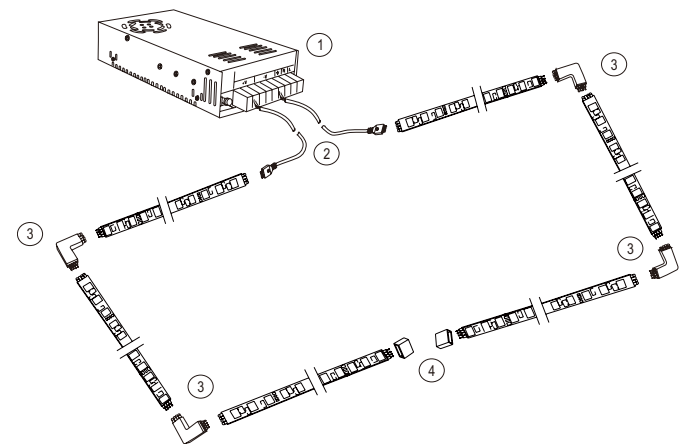
1. Direct Wire Driver
2. E53362 Output Cord
3. E53389 RGB Controller
4. E53390 RGB Amplifier

5. RGB Channel/Channel 24



1. Driver
2. E53385 RGB Controller
(For RGB Channel 24 Only)
3. 36" Channel Star
4. 12" Channel Star
5. E53265 3" Connecting cord
6. 24" Channel Star
7. 48" Channel Star
8. E53267 13" Connecting Cord

6. 320 Watt Driver w/2 Outputs



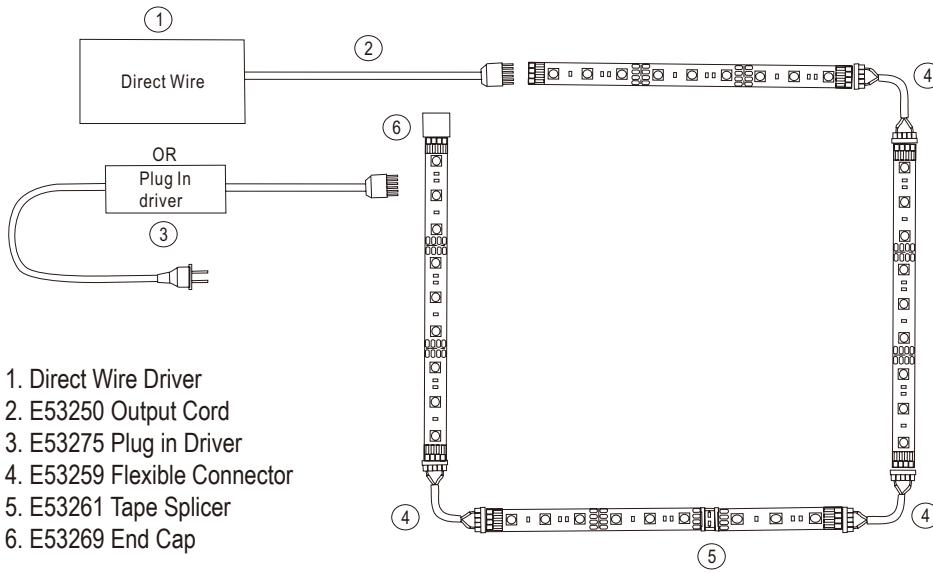
1. E53328 320w Direct Wire Driver
2. 2 x 53253 Output Cords
3. E53464 90° connector
4. E53269 End Cap

24V Installation and Design Guidelines

- StarStrand Elite 24, StarStrand Ultima 24, StarStrand Aqua 24, StarStrand RGB 24 and StarStrand RGB Aqua 24 can be field cut every 4". Once the tape is cut you CANNOT add a power connector or rejoin to start section.
- Polarity for StarStrand RGB 24 must be maintained. Each tape has + positive pin. Connectors are marked with + symbol. Positive polarity must be maintained or a section will not light. It is recommended to install all sections and power up to make sure polarity is correct before adhering to surface.
- Use the StarStrand 4-Pin 4-Way Connector (E53263) or StarStrand 6-Pin 4-Way Connector (E53350) to get to 90 degree angles and turns. Connector Cords and the Starstrand 6-Pin 90 degree Connector (E53464) can also be used for corners and around obstacles. IT IS NOT RECOMMENDED TO BEND TAPE MORE THAN 45 DEGREES.
- StarStrand 4-Pin 4-Way Connector (E53263) or StarStrand 6-Pin 4-Way Connector (E53350) can also be used to power branched runs up to the maximum. Positioning of the driver is critical to limit the amount of drivers required for each installation.
- Connector Cords can be used between the driver and the first tape section, driver and dimming controller, driver and RGB controller, dimming controller and first tape section, RGB controller and first tape section, between sections, to go around corners and to extend runs.
- StarStrand 36" Universal Aluminum Channel (E53254) can be used to install on irregular surfaces and also areas where tape will be visible and needs to be concealed.
- StarStrand 6-Pin Silicone End Cap (E53469) should be used at every termination whether tape is cut or not.
- StarStrand 24V RGB Controller (E53385) is necessary for every StarStrand RGB 24 and StarStrand RGB Channel 24 installations and is installed after the driver and before the first section of StarStrand RGB 24 tape or StarStrand RGB Channel 24. StarStrand 24V RGB Controller (E53385) will only work on StarStrand RGB 24 or StarStrand RGB Channel 24.
- StarStrand 24V Weatherproof RGB Controller (E53389) is necessary for every StarStrand RGB Aqua 24 installation and is installed after the driver and before the first section of StarStrand RGB Aqua 24 tape. StarStrand 24V Weatherproof RGB Controller (E53389) will only work on StarStrand RGB Aqua 24.
- StarStrand 24V Dimming Controller (E53393) will work on StarStrand Elite 24, StarStrand Ultima 24 and StarStrand Channel 24. StarStrand 24V Dimming Controller (E53393) is installed after the driver and before the first section of tape.
- StarStrand 24V 96w Direct Wire Driver (E53286), StarStrand 24V 60w Dimmable Direct Wire Driver (E53311), StarStrand 24V 100w Dimmable Direct Wire Driver (E53315), StarStrand 24V 100w Dimmable Direct Wire Driver (E53316), StarStrand 24V 60w Weatherproof Driver (E53380), StarStrand 24V 150w Weatherproof Driver (E53381), StarStrand 24V 75w Plug-In Driver and StarStrand 24V 60w Plug-In Driver (E53313) are Class II drivers.
- StarStrand 4-Pin Connector Cords, Input Cords and Output Cords are made from 22 gauge wire. StarStrand 6-Pin Connector Cords, Input Cords and Output Cords are made from 20 gauge wire.
- StarStrand Connector Cords are not CL2/CL3 rated. This means that the connection cords are not fire rated for in-wall installations.
- In order to do an in-wall installation for StarStrand, the customer will need to purchase the StarStrand 4-Pin Rough In Terminal Block" (E53257), StarStrand 6-Pin Rough In Terminal Block" (E53258) or StarStrand 4-Pin RGB Rough In Terminal Block (E53383) and place the blocks on each side of CL2/CL3 rated low voltage wire. A sample installation would be Romex/Line > Driver > Driver Output Cord > Rough In Terminal Block > Wall > CL2/CL3 rated low voltage wire > Wall > Rough in Terminal Block > Tape
- If splicing connector cords is required, when splicing the 4-Pin connecting cords, the Red/Blue wire are Negative, the Black/Green wire are Positive. When splicing the 6-Pin connecting cords, the Blue wire is Negative, the Brown wire is Positive.
- The maximum amount of cord (driver output cord, connecting cord, RGB controller input cord, dimming controller input cord, RGB controller output cord, dimming controller output cord) that can be used in any StarStrand 12V or StarStrand 24V run is 24 total feet before any voltage drop will occur. Connecting cords can also be used to increase the distance between the driver and tape, driver and dimming controller, driver and RGB controller, dimming controller and tape, RGB controller and tape, not to exceed 24 total feet.

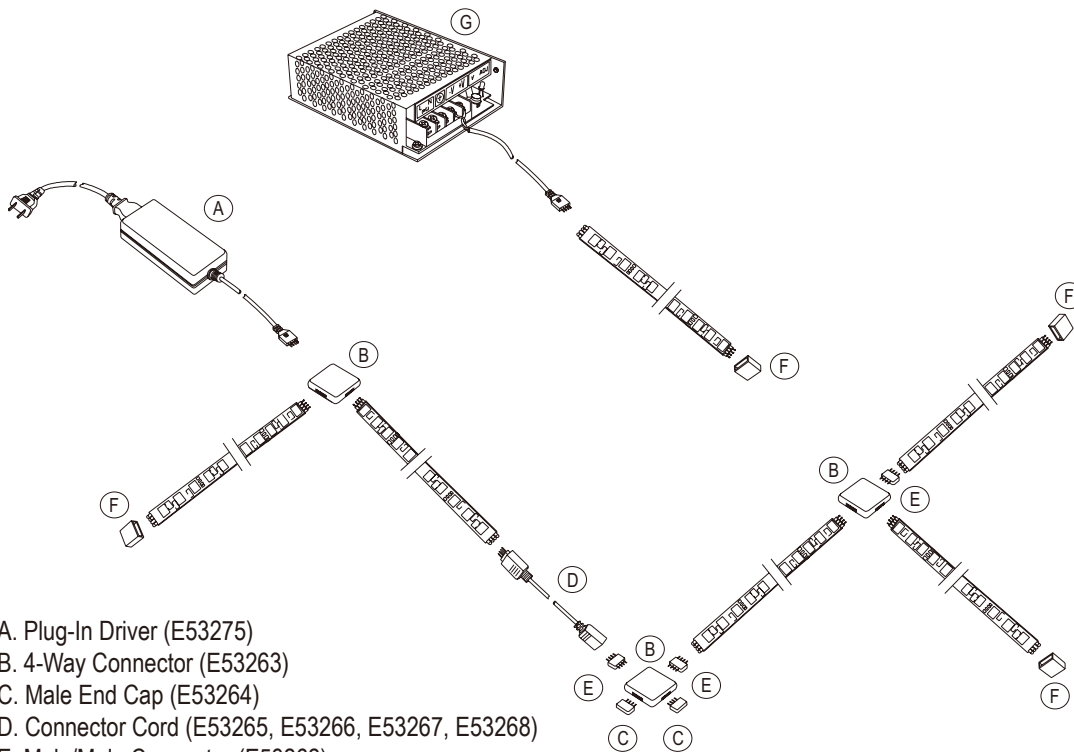
12V Diagram

7. Basic



1. Direct Wire Driver
2. E53250 Output Cord
3. E53275 Plug in Driver
4. E53259 Flexible Connector
5. E53261 Tape Splicer
6. E53269 End Cap

8. Super / Ultra



- A. Plug-In Driver (E53275)
- B. 4-Way Connector (E53263)
- C. Male End Cap (E53264)
- D. Connector Cord (E53265, E53266, E53267, E53268)
- E. Male/Male Connector (E53262)
- F. Silicone End Cap (E53269)
- G. Direct-Wire Driver (E53276, E53277)

12V Installation and Design Guidelines

- StarStrand Basic, StarStrand Super and StarStrand Ultra can be field cut every 2". Once the tape is cut, with the exception of StarStrand Basic, you cannot add a power connector or rejoin to start section.
- Polarity must be maintained. Each tape has + positive pin. Connectors are marked with + symbol. Positive polarity must be maintained or a section will not light. It is recommended to install all sections and power up to make sure polarity is correct before adhering to surface.
- Use the StarStrand 4-Pin 4-Way Connector (E53263) and 2" sections to get to 90 degree angles and turns. Connector Cords can also be used for corners and around obstacles. IT IS NOT RECOMMENDED TO BEND TAPE MORE THAN 45 DEGREES.
- The StarStrand 4-Pin 4-Way Connector (E53263) can also be used to power branched runs up to the maximum. Positioning of the 12V driver is critical to limit the amount of drivers required for each installation. Position 12V driver in middle of, or corners of, runs and to power the StarStrand 4-Pin 4-Way Connector (E53263).
- Connector Cords can be used between the driver and the first tape section, driver and dimming controller, between sections, to go around corners and to extend runs.
- StarStrand 36" Universal Aluminum Channel (E53254) can be used to install on irregular surfaces and also areas where tape will be visible and needs to be concealed.
- StarStrand 4-Pin Male End Cap (E53264) and StarStrand 4-Pin Silicone End Cap (E53269) should be used at every termination whether tape is cut or not.
- StarStrand 12V Dimming Controller (E53282) will work on StarStrand Basic, StarStrand Super and StarStrand Ultra . StarStrand 12V Dimming Controller (E53282) is installed after the driver and before the first section of tape.
- StarStrand 12V 60w Indoor Plug In Driver (E53275), StarStrand 12V 60w Direct Wire Driver (E53305), StarStrand 12V 96w Direct Wire Driver (E53306) and StarStrand 12V 60w Dimmable Direct Wire Driver (E53310) are Class II Drivers.
- StarStrand 4-Pin Connector Cords, Input Cords and Output Cords are made from 22 gauge wire.
- StarStrand Connector Cords are not CL2/CL3 rated. This means that the connection cords are not fire rated for in-wall installations.
- In order to do an in-wall installation for StarStrand, the customer will need to purchase the StarStrand 4-Pin Rough In Terminal Block" (E53257) and place the blocks on each side of CL2/CL3 rated low voltage wire. A sample installation would be Romex/Line > Driver > Driver Output Cord > Rough In Terminal Block > Wall > CL2/CL3 rated low voltage wire > Wall > Rough in Terminal Block > Tape
- If splicing connector cords is required, when splicing, the Red/Blue wire are Negative, the Black/Green wire are Positive.
- The maximum amount of cord (driver output cord, connecting cord, dimming controller input cord, dimming controller output cord) that can be used in any StarStrand 12V run is 24 total feet before any voltage drop will occur. Connecting cords can also be used to increase the distance between the driver and tape, driver and dimming controller, dimming controller and tape, not to exceed 24 total feet.

UNDER CABINET | ET-LED-A Series

This state-of-the-art LED light bar raises under cabinet lighting to a whole new level. The crisp white light illuminates without shadows, and its direct wire plug in and easy clip installation make it convenient as well as beautiful.

Features

- Uses 80% less power than incandescent
- 50,000 life hours
- Cool to touch
- Linkable up to 30 LEDs
- Warm white 3000 K light



Bronze
Black Accessories



White
White Accessories



Satin Aluminum
Black Accessories

10" LED Light Kit

- E57902-WT** White
- E57902-SA** Satin Aluminum
- E57902-MB** Bronze
- 9.75"L x 2"W x 1"H
- 2 x 1w (160 Lumens)

20" LED Light Kit

- E57904-WT** White
- E57904-SA** Satin Aluminum
- E57904-MB** Bronze
- 19.125"L x 2"W x 1"H
- 4 x 1w (320 Lumens)

30" LED Light Kit

- E57906-WT** White
- E57906-SA** Satin Aluminum
- E57906-MB** Bronze
- 28.5"L x 2"W x 1"H
- 6 x 1w (480 Lumens)

Includes

- LED Under Cabinet Light
- One 18" InterLink2 Connector Cord
- One InterLink2 Coupler
- One InterLink2 Direct Wire Box
- Installation Hardware



OPTIONAL COMPONENTS

InterLink2 Power Cord

- E57817-WT** White
- E57817-BK** Black
- 72"L



InterLink2 Connector Cord

- 18" **E57819-WT** White
- 18" **E57819-BK** Black
- 9" **E57818-WT** White
- 9" **E57818-BK** Black



InterLink2 Direct Wire Box

- E57803-WT** White
- E57803-BK** Black
- 4"W x 1"H x 2"L



InterLink2 Coupler

- E57820-WT** White
- E57820-BK** Black
- 2"W x .375"H x .5"L



InterLink2 Cord Coupler

- E57823-WT** White
- E57823-BK** Black
- 2.125"W x .375"H x .625"L



UNDER CABINET | ET-LED-B Series

With a sleek profile and direct wiring, this state-of-the-art direct wire unit installs easily under the cabinet and emits a crisp white light which illuminates without shadows. The hinged top gives easy access for installation and wiring. Cabinets stay cool and safe with LED light output.

Features

- Warm white 3000 K light
- Cool to touch
- CRI 70-75, 120° beam spread
- 50,000 life hours
- 5 captured screws
- Multiple, full size knock outs
- 4-Way dimming switch, Hi/Med/Low Light/Off
- Linkable with or without cord using InterLink3



Bronze



White



7" 2-Light LED Direct Wire

E57912-WT White
E57912-MB Bronze
 7"L x 5"W x 1.25"H
 2 x 1w (160 Lumens)

13" 4-Light LED Direct Wire

E57913-WT White
E57913-MB Bronze
 12.875"L x 5"W x 1.25"H
 4 x 1w (320 Lumens)

21" 6-Light LED Direct Wire

E57914-WT White
E57914-MB Bronze
 21"L x 5"W x 1.25"H
 6 x 1w (480 Lumens)

30" 8-Light LED Direct Wire

E57916-WT White
E57916-MB Bronze
 30"L x 5"W x 1.25"H
 8 x 1w (640 Lumens)

OPTIONAL COMPONENTS



InterLink3 Power Cord
E57860-WT White
E57860-BK Black
 72"L

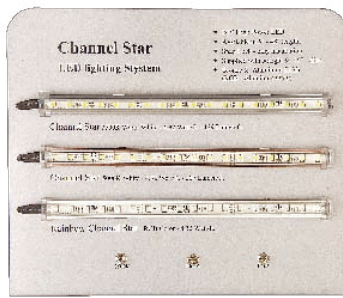


InterLink3 Direct Wire Box
E57850-WT White
E57850-BK Black
 5"W x 1"H x 2.25"L



InterLink3 Connector Cord
 9" **E57856-WT** White
 9" **E57856-BK** Black
 18" **E57857-WT** White
 18" **E57857-BK** Black
 24" **E57858-WT** White
 24" **E57858-BK** Black

DISPLAYS & SELLING CASES



H



E



G



F



A

B

C

D

**A. Under Cabinet ET-LED-A Series
EDSP022LA
24"W x 12"H x 12"L**

**B. Under Cabinet ET-LED-B Series
EDSP022LB
24"W x 12"H x 12"L**

**C. Under Cabinet Display Riser
EDSP024-WT
24"W x 6"H x 9"L**

**D. Under Cabinet Storage Cabinet
EDSP025-WT
24"W x 30"H x 18"L**

**E. StarStrand Counter Display 24V
EDSP012-SV
14"W x 12"H x 6"L**

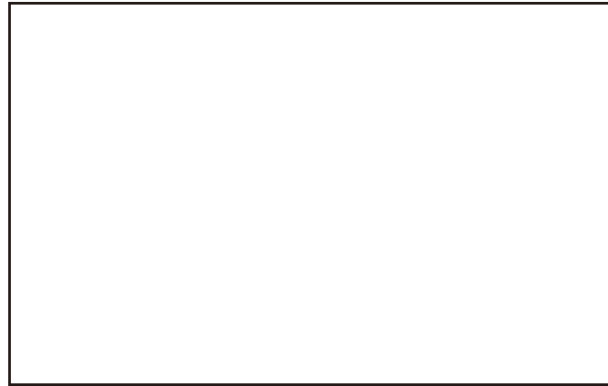
**F. Under Cabinet Selling Case
EDSP016-AL
27"W x 7"H x 16.5"L**

**G. StarStrand Brief Case 24V
EDSP013-AL
16.5"W x 4.75"H x 12.5"L**

**H. StarStrand Channel 24
EDSP014-SV
14"W x 12"H x 6"L**



All Under Cabinet and StarStrand™ electrical products are certified and listed to UL/ETL standards for use in U.S.A. and Canada.



 Contemporary Lighting™

ET2 Contemporary lighting

253 North Vineland Avenue
City of Industry, California
91746
USA

General Info: 626.956.4200
Customer Service: 800.486.2946
General Fax: 626.956.4235

Dallas Trade Mart: 214.748.8455
Showroom: 3901
Email: info@et2online.com
Web: www.et2online.com

3M brand is a trademark and copyright of 3M. ET2 Contemporary Lighting, StarStrand and StarChip are trademarks of Maxim Lighting International, Inc. All designs, logos and images © 2010 ET2 Contemporary Lighting International, Inc. All Rights Reserved. LETBRO1008 1008