

FEATURES & SPECIFICATIONS

INTENDED USE

Provides an LED lighting platform to deliver general or task lighting for residential and light commercial applications. Light engine delivers long life and excellent color to ensure a quality, low-maintenance light installation. Ideal for use in bathrooms, lavatories, hallways, corridors, stairways, utility areas and more.

CONSTRUCTION

The Contemporary Square Vanity is constructed of an acrylic diffuser with housings available in either a brushed nickel, bronze, or chrome finish. The included canopy/junction box cover is removable for a more low-profile look (2'-4' lengths only). The white acrylic diffuser provides even illumination and softens the appearance of the LEDs for improved aesthetics.

OPTICS

1' produces 650 lumens, 2' produces 1300 lumens, 3' produces 1900 lumens, and 4' produces 2500 lumens at 3000K with 50,000 hours of life.

Extruded acrylic diffuser is of highly transmissive material to minimize LED image and provides high-angle brightness control.

ELECTRICAL

Long-life LEDs, coupled with a multivolt driver, provide extended service life. Standard input = 9.5 watts, (1'); 18 watts, (2'); 26 watts, (3'); 34 watts, (4'). Fixture is rated to deliver L70 performance at 50,000 hours and operates at 120-277 volts.

Use with non-dimmable switches only.

LISTINGS

UL Listed to US and Canadian safety standards. Listed for damp locations. ENERGY STAR® certified.

WARRANTY

5-year limited warranty. Complete warranty terms located at www.acuitybrands.com/CustomerResources/Terms_and_conditions.aspx

NOTE: Actual performance may differ as a result of end-user environment and application. All values are design or typical values, measured under laboratory conditions at 25 °C. Specifications subject to change without notice.

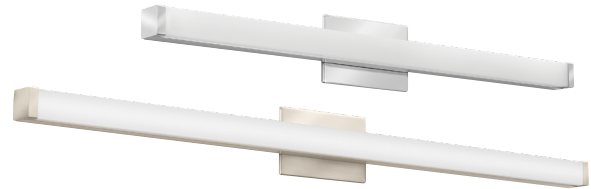
SPECIFICATIONS	1FT	2FT	3FT	4FT
Length:	12-9/16 (320)	21-7/16 (545)	33-1/4 (845)	45-1/16 (1145)
Weight:	1.55 (.70)	2.15 (.98)	2.55 (1.16)	3.15 (1.43)
3000K Lumens (LPW)	665 (70)	1304 (72)	1922 (73)	2554 (75)
4000K Lumens (LPW)	702 (73)	1375 (76)	2026 (77)	2692 (79)

All dimensions are inches (millimeters) unless otherwise indicated. Weights are pounds (kilograms).

Catalog Number
Notes
Type

Decorative Indoor

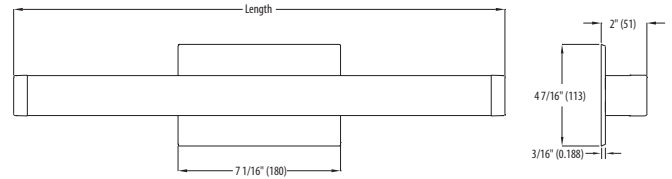
Contemporary Square Vanity



VANITY LED



U.S. PATENT PENDING



ORDERING INFORMATION

For shortest lead times, configure product using **bolded options**.

Example: FMVCSL 24IN MVOLT 30K 90CRI BZ

Series	Length	Voltage	Color temperature	CRI	Finish
FMVCSL Contemporary Square Vanity	12IN 1' Nominal	MVOLT MVOLT (120V-277V)	40K 4000 K ¹	90CRI >90	BN Brushed Nickel
	24IN 2' Nominal		35K 3500 K ²		KR Chrome
	36IN 3' Nominal		30K 3000 K		BZ Bronze
	48IN 4' Nominal		27K 2700 K ²		

Replacement parts: Order as separate catalog number.

DFMVCSL 12IN	1' Contemporary Square replacement diffuser
DFMVCSL 24IN	2' Contemporary Square replacement diffuser
DFMVCSL 36IN	3' Contemporary Square replacement diffuser
DFMVCSL 48IN	4' Contemporary Square replacement diffuser

Notes

- 60-day lead time for non-stock color temperatures; minimum 50 order quantity.
- 90-day lead time for non-standard color temperatures; minimum 50 order quantity.

LED Vanity Contemporary Square

PHOTOMETRICS

Distribution Curve

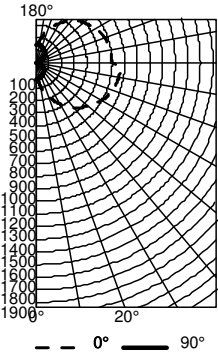
Distribution Data

Output Data

Coefficient of Utilization

Illuminance Data at 30" Above Floor for a Single Luminaire

FMVCL 48IN, 3000K LEDs, input watts: 31.9, delivered lumens: 2,554, LM/W=80, test no. LTL29697M, tested in accordance with IESNA LM 79-80.



CP Summary

Beam Angle	Beam Diameter (mm)	Illuminance (lx)
0°	130	130
5°	151	130
15°	239	123
25°	334	112
35°	423	99
45°	502	84
55°	568	65
65°	621	44
75°	654	22
85°	667	3
90°	599	7

Coefficients of Utilization

RCP	pf	20%						50%						
		80%		30%		70%		30%		70%		50%		
	pc	pw	70%	50%	30%	10%	70%	50%	30%	10%	70%	50%	30%	10%
0	107	107	107	107	99	99	99	83	83	83	83	83	83	83
1	93	87	82	80	75	71	66	63	59	56	50	46	42	37
2	83	74	66	67	60	55	56	50	46	42	35	30	25	20
3	75	63	54	58	50	44	48	42	36	37	30	25	20	15
4	68	55	46	50	42	36	42	35	30	37	30	25	20	15
5	62	49	39	44	36	30	37	30	25	29	23	18	14	10
6	57	43	34	40	31	25	33	26	21	29	23	18	14	10
7	52	39	30	35	27	22	29	23	18	26	20	16	12	8
8	48	35	26	32	24	19	26	20	16	24	18	14	10	7
9	45	32	23	29	22	17	24	18	14	22	16	12	8	5
10	42	29	21	27	19	15	22	16	12	20	14	10	7	4

Zonal Lumen Summary

Zone	Lumens	% Lamp	% Fixture
0° - 30°	139	5.4	5.4
0° - 40°	260	10.2	10.2
0° - 60°	608	23.8	23.8
0° - 90°	1255	49.1	49.1
90° - 120°	662	25.9	25.9
90° - 130°	858	33.6	33.6
90° - 150°	1152	45.1	45.1
90° - 180°	1299	50.9	50.9
0° - 180°	2554	100.0	100.0

LIGHTING FACTS

Lithonia Lighting

Lighting facts
A Program of the U.S. DOE

Light Output (Lumens) 665
Watts 9.09
Lumens per Watt (Efficacy) 73.16

Color Accuracy
Color Rendering Index (CRI) 94

Light Color
Correlated Color Temperature (CCT) 3000 (Bright White)

Warm White Bright White Daylight

2700K 3000K 4500K 6500K

All results are according to IESNA LM-79-2008: Approved Method for the Electrical and Photometric Testing of Solid-State Lighting. The U.S. Department of Energy (DOE) verifies product test data and results.

Visit www.lightingfacts.com for the Label Reference Guide.

Registration Number: NJSM-85UQ2P (2/10/2016)
Model Number: FMVCSL 12IN 30K 90CRI
Type: Luminaire - Industrial

Lithonia Lighting

Lighting facts
A Program of the U.S. DOE

Light Output (Lumens) 1304
Watts 17.68
Lumens per Watt (Efficacy) 73.76

Color Accuracy
Color Rendering Index (CRI) 94

Light Color
Correlated Color Temperature (CCT) 3000 (Bright White)

Warm White Bright White Daylight

2700K 3000K 4500K 6500K

All results are according to IESNA LM-79-2008: Approved Method for the Electrical and Photometric Testing of Solid-State Lighting. The U.S. Department of Energy (DOE) verifies product test data and results.

Visit www.lightingfacts.com for the Label Reference Guide.

Registration Number: NJSM-ERBPZS (2/10/2016)
Model Number: FMVCSL 24IN 30K 90CRI
Type: Luminaire - Industrial

Lithonia Lighting

Lighting facts
A Program of the U.S. DOE

Light Output (Lumens) 1922
Watts 25.27
Lumens per Watt (Efficacy) 76.06

Color Accuracy
Color Rendering Index (CRI) 94

Light Color
Correlated Color Temperature (CCT) 3000 (Bright White)

Warm White Bright White Daylight

2700K 3000K 4500K 6500K

All results are according to IESNA LM-79-2008: Approved Method for the Electrical and Photometric Testing of Solid-State Lighting. The U.S. Department of Energy (DOE) verifies product test data and results.

Visit www.lightingfacts.com for the Label Reference Guide.

Registration Number: NJSM-82IDBL (2/10/2016)
Model Number: FMVCSL 36IN 30K 90CRI
Type: Luminaire - Industrial

Lithonia Lighting

Lighting facts
A Program of the U.S. DOE

Light Output (Lumens) 2512
Watts 31.92
Lumens per Watt (Efficacy) 78.7

Color Accuracy
Color Rendering Index (CRI) 93

Light Color
Correlated Color Temperature (CCT) 3000 (Bright White)

Warm White Bright White Daylight

2700K 3000K 4500K 6500K

All results are according to IESNA LM-79-2008: Approved Method for the Electrical and Photometric Testing of Solid-State Lighting. The U.S. Department of Energy (DOE) verifies product test data and results.

Visit www.lightingfacts.com for the Label Reference Guide.

Registration Number: NJSM-PG33IA (2/10/2016)
Model Number: FMVCSL 48IN 30K 90CRI
Type: Luminaire - Industrial